

# 1 ERS-1 C-band results

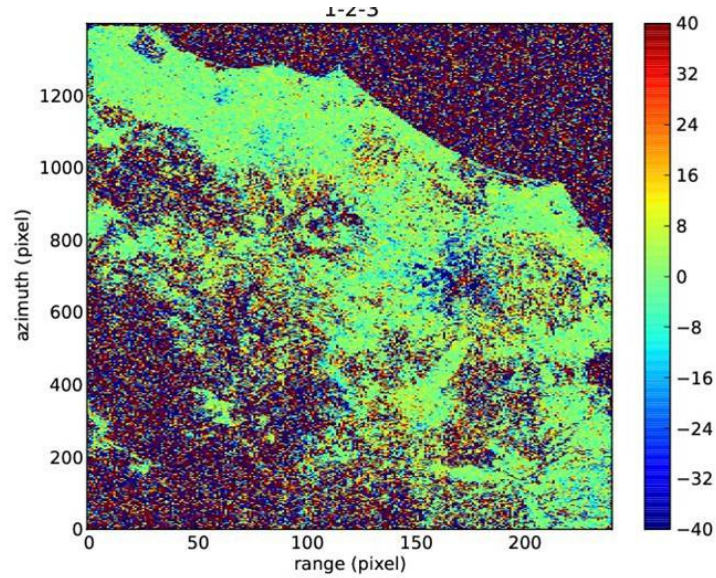


Figure 1: Phase inconsistency observed over Rome (Italy) acquired by ERS-1. The color scale is in degrees. Acquisition dates: 1993-12-26, 1994-12-29, 1994-01-01. Heights of ambiguity: 53 m, 60 m, -27 m.

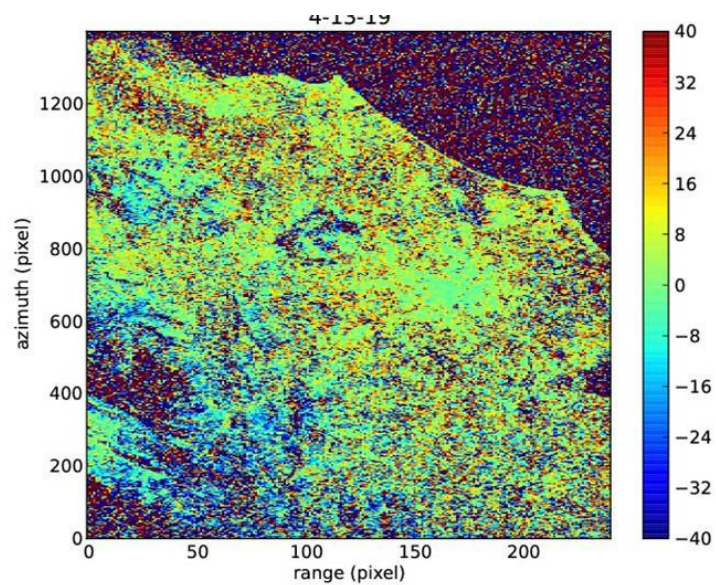


Figure 2: Phase inconsistency observed over Rome (Italy) acquired by ERS-1. The color scale is in degrees. Acquisition dates: 1994-01-07, 1994-02-24, 1994-03-07. Heights of ambiguity: -698 m, -165 m, +217 m.

## 2 TropiScat P-band results

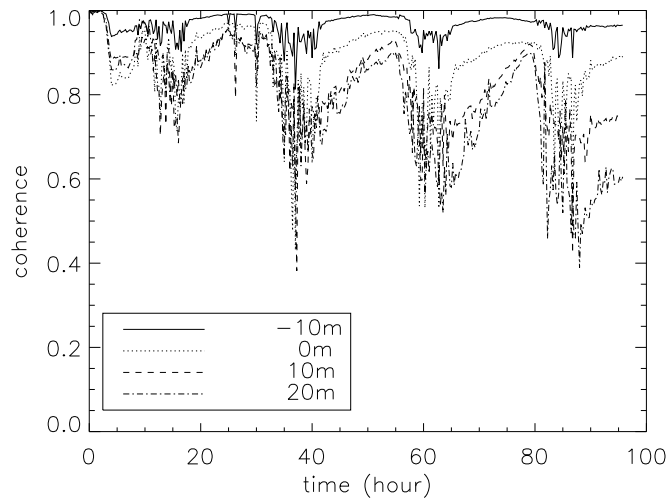


Figure 3: The TropiScat interferometric coherence at different heights, starting from 2011-12-15 @ 0h:00m, HH polarization

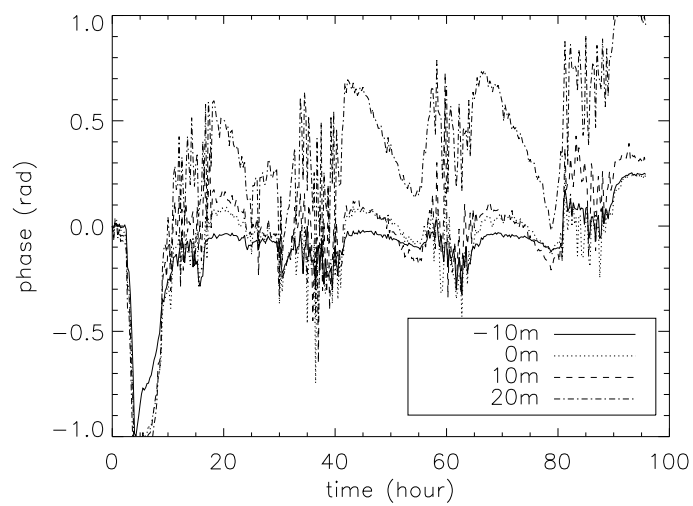


Figure 4: The TropiScat interferometric phase at different heights, starting from 2011-12-15 @ 0h:00m, HH polarization

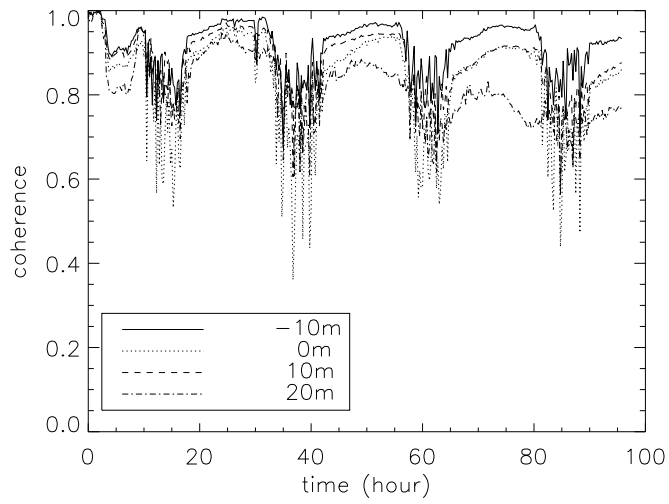


Figure 5: The TropiScat interferometric coherence at different heights, starting from 2011-12-15 @ 0h:00m, VV polarization

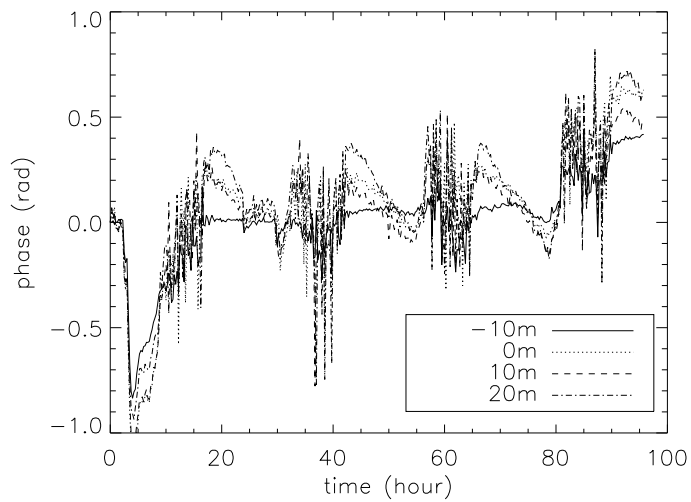


Figure 6: The TropiScat interferometric phase at different heights, starting from 2011-12-15 @ 0h:00m, VV polarization