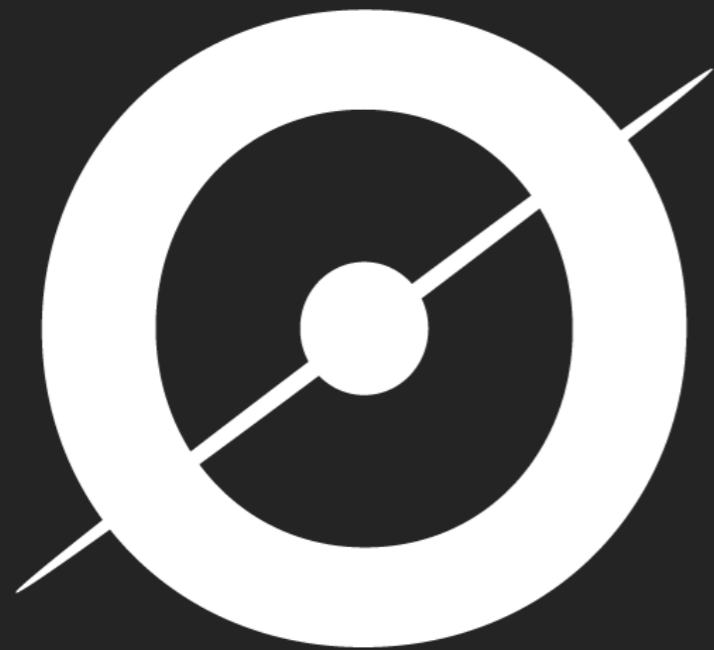


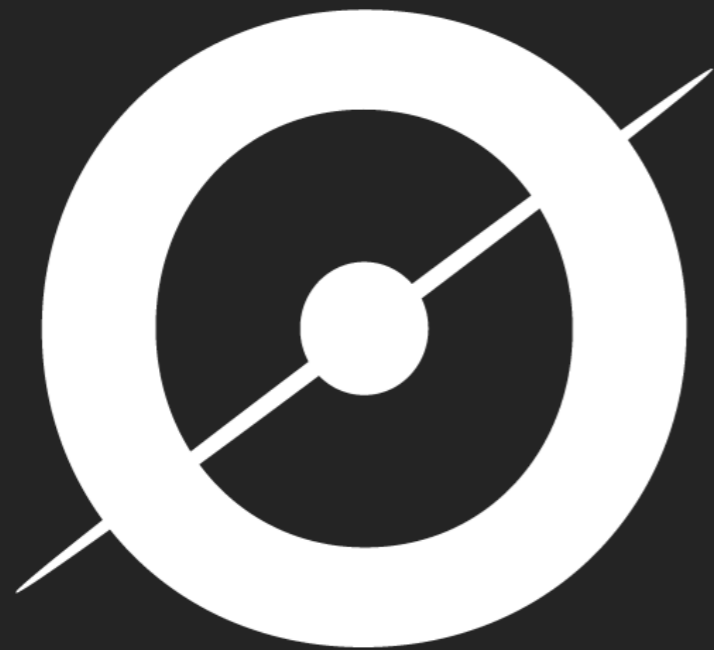
# EO and Citizen Science with 1.4 million volunteers



Brooke Simmons

Zooniverse  
University of Oxford

# EO and Citizen Science with 1.4 million volunteers

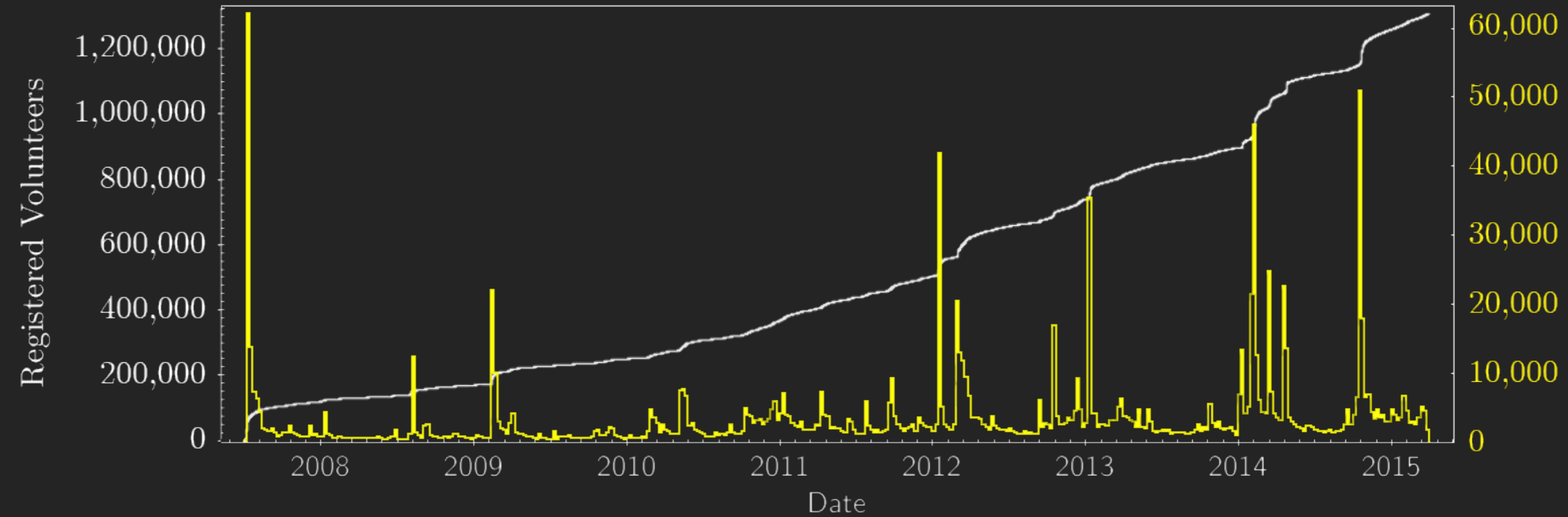


Brooke Simmons

Zooniverse

University of Oxford

# ZOO NIVERSE





Brooke Simmons

## Monitor Penguins in Remote Regions

Scientists have travelled to some of the coldest areas on the planet to learn more about penguin populations. Help annotate their images of wildlife in Antarctica and the Southern Ocean.

11375 IMAGES CLASSIFIED

**Get started!**

434 VOLUNTEERS PARTICIPATING



Do the simplest thing that works.



# Design

CLASSIFY SCIENCE STORY **GALAXY ZOO** ASTRONOMERS DISCUSS PROFILE

Classify [Help](#) [Restart](#)

SHAPE  
Is the galaxy simply smooth and rounded, with no sign of a disk?

Smooth Features or disk Star or artifact

SEAFLOOR EXPLORER [Home](#) [About](#) [Science](#) [Classify](#) [Profile](#) [FAQ](#) [Talk](#) [Blog](#)

Ground covers in this image

- sand
- shell
- gravel
- cobble
- boulder
- can't tell

[Done identifying ground cover](#)

[Need help?](#) [Field guide](#) [Tutorial](#)

PLANET FOUR

Classify

- Fan
- Blotch
- Interesting feature
- [Mark as favorite](#)
- [Finished](#)

[About](#)

[Profile](#)

[Discuss](#)

[Blog](#)

MOON ZOO [Play](#) [About](#) [Community](#)

- [Craters](#)
- [Boulder Wars](#)
- [My Moon Zoo](#)
- [Level](#)
- [Explore Moon](#)
- [Glossary](#)
- [Tutorials](#)
- [FAQ](#)
- [Forum](#)
- [Blog](#)
- [Moonmeter](#)
- [Log Out](#)

Crater Survey

Examples

- 
- 
- 
- 
- 
- 

[SUBMIT](#)

[Illumination](#) [Crater](#) [Mound](#)



CLASSIFY SCIENCE STORY **GALAXY ZOO** ASTRONOMERS DISCUSS PROFILE

Classify

**BULGE**  
How prominent is the central bulge, compared with the rest of the galaxy?

No bulge  Just noticeable  Obvious  Dominant

SEAFLOOR EXPLORER

Species in this image

scallop	2
fish	0
seastar	0
crustacean	0

Are there any other species present in this image?

Need help? [Field guide](#) [Tutorial](#)

PLANET FOUR

Classify

About  
Profile  
Discuss  
Blog

MOON ZOO

Cones  
Boulder Wre  
My Moon Zoo  
Lies!

Explore Moon  
Glossary  
Tutorial  
FAQ

Forum  
Blog  
Moonometer  
Log Out

Crater Survey

Examples

Submit your marking

Summit  
Center  
Mount

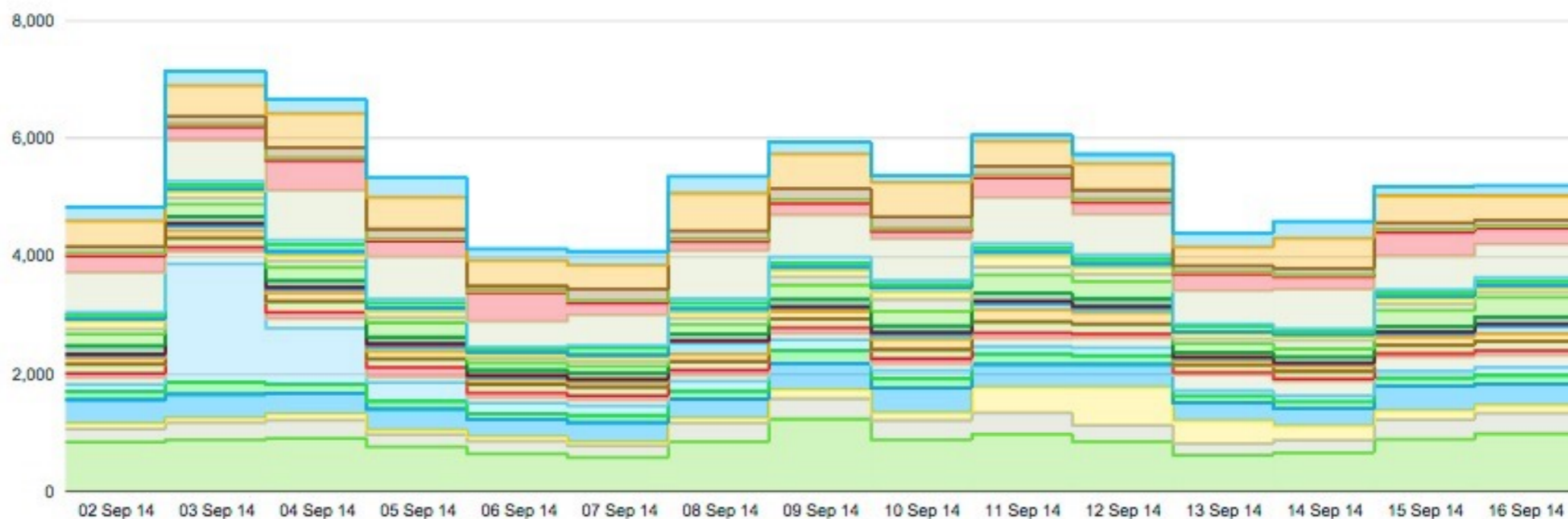




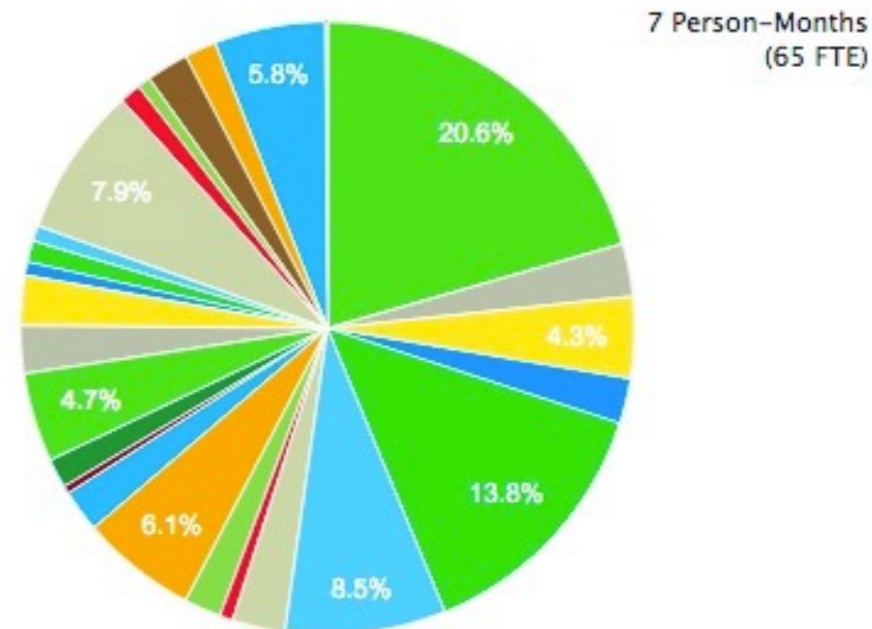
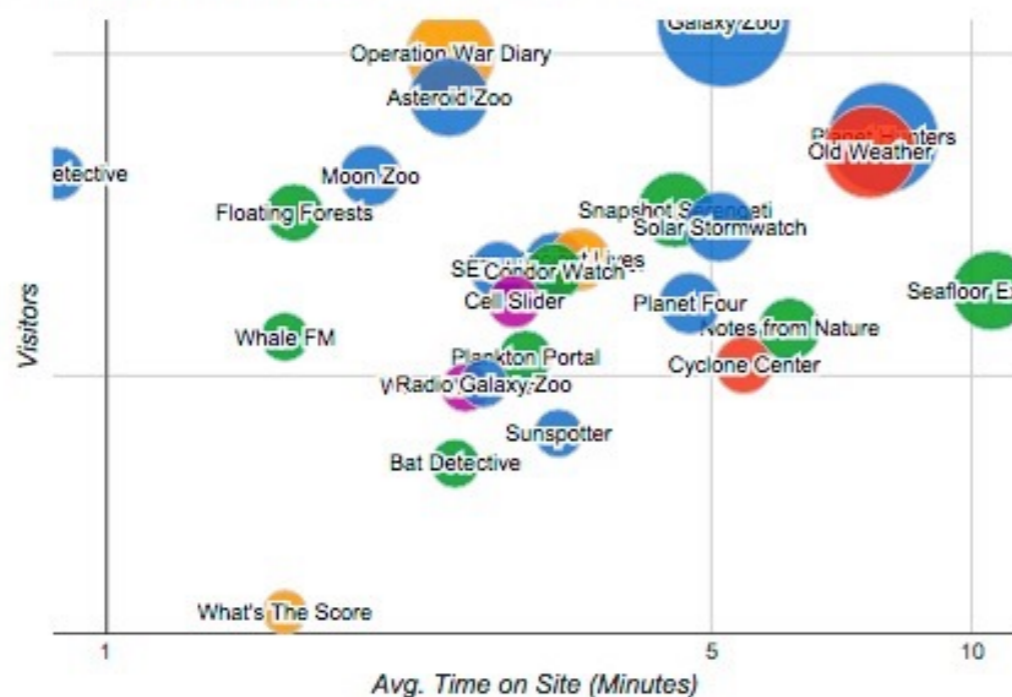
## ZOONIVERSE

396,234 Pageviews (28,302 pageviews-per-day)  
80,001 Visitors (4 pages-per-visit)  
2 hours page load time

### Daily Visits Across Projects



### Human Attention Across The Zooniverse





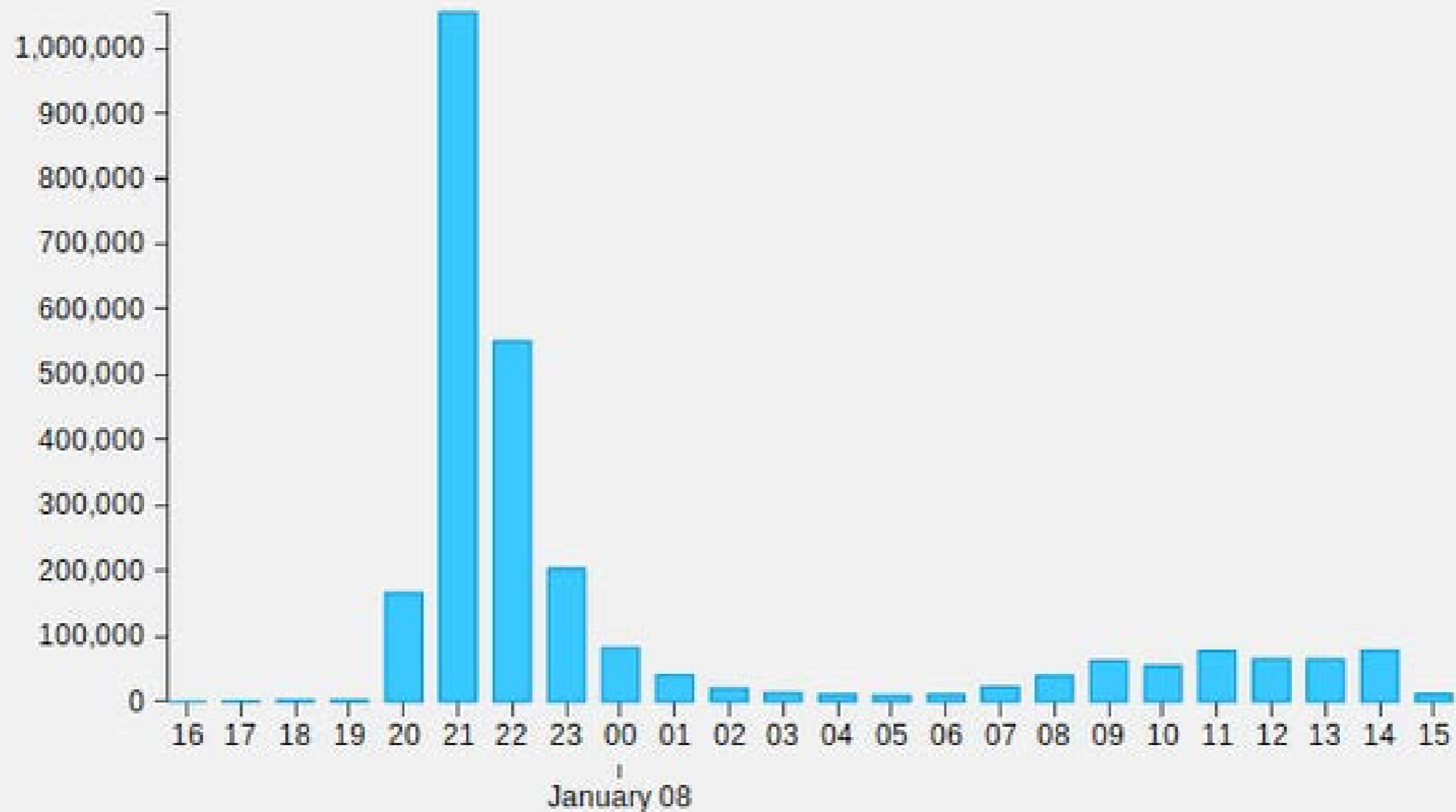
 Space Warps

## CLASSIFICATIONS

# 13,556,711

Total

### Classifications per Hour





Design • Scale • Results

vrooje  
SIGN OUT



TYPHOON HAIYAN (YOLANDA)

# THE PLANETARY RESPONSE NETWORK: BETA

HOME CLASSIFY PROFILE TEAM FEEDBACK

Join the relief effort to help crisis victims

Your help is needed to examine the affected areas and help humanitarian organizations provide aid.

**Get started!**



vrooje  
SIGN OUT



TYPHOON HAIYAN (YOLANDA)

# THE PLANETARY RESPONSE NETWORK: BETA

HOME CLASSIFY PROFILE TEAM FEEDBACK

☆ Save

🗨 Hide old marks

🎓 Restart tutorial



SHOW  
BEFORE

Select and mark any  
of the following  
features.

Crowd of People

Blocked Road

Tarp/Shelter

Flooding

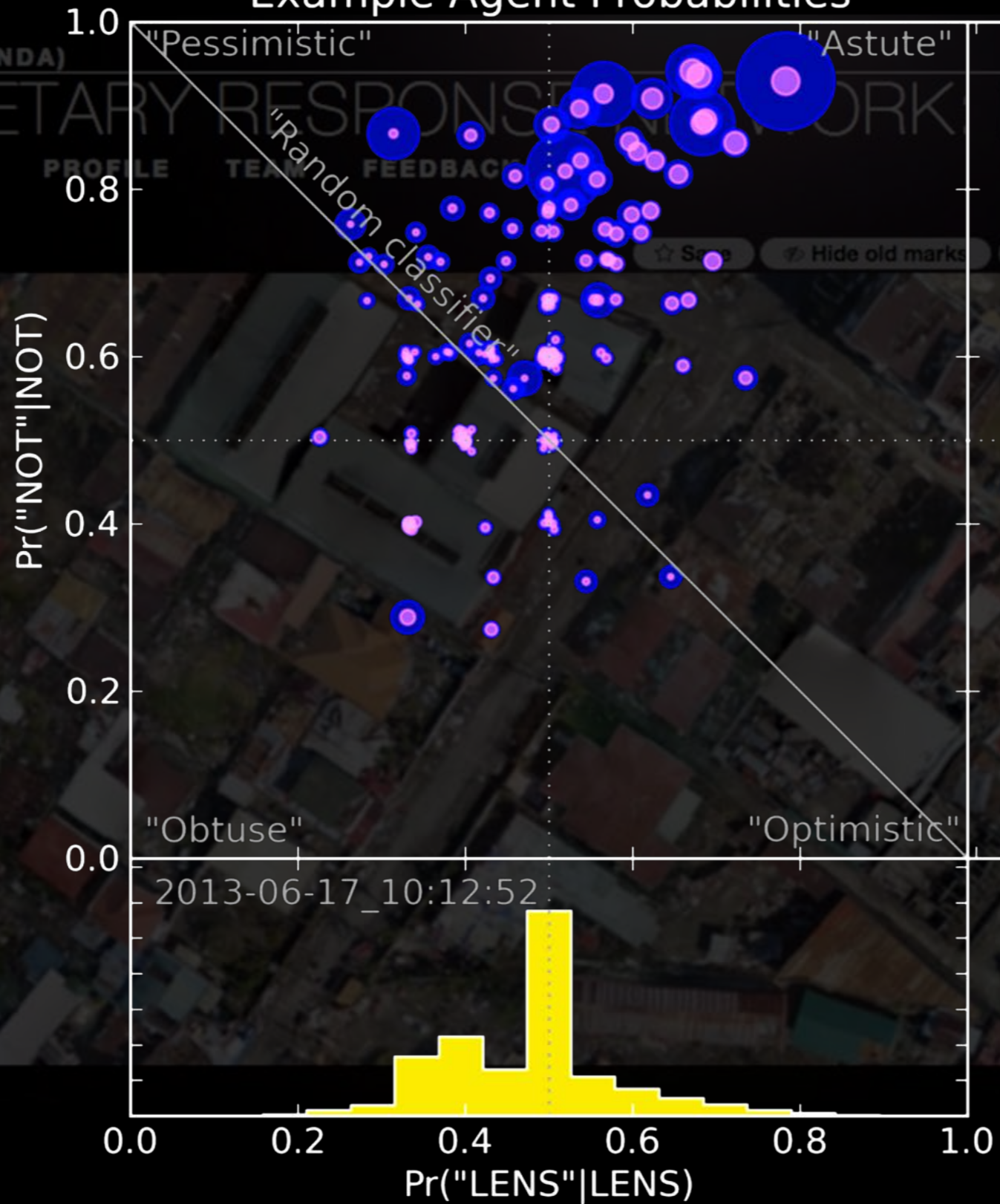
Structural  
damage

OK



# Design • Scale • Results

### Example Agent Probabilities



vrooje  
SIGN OUT



SHOW BEFORE

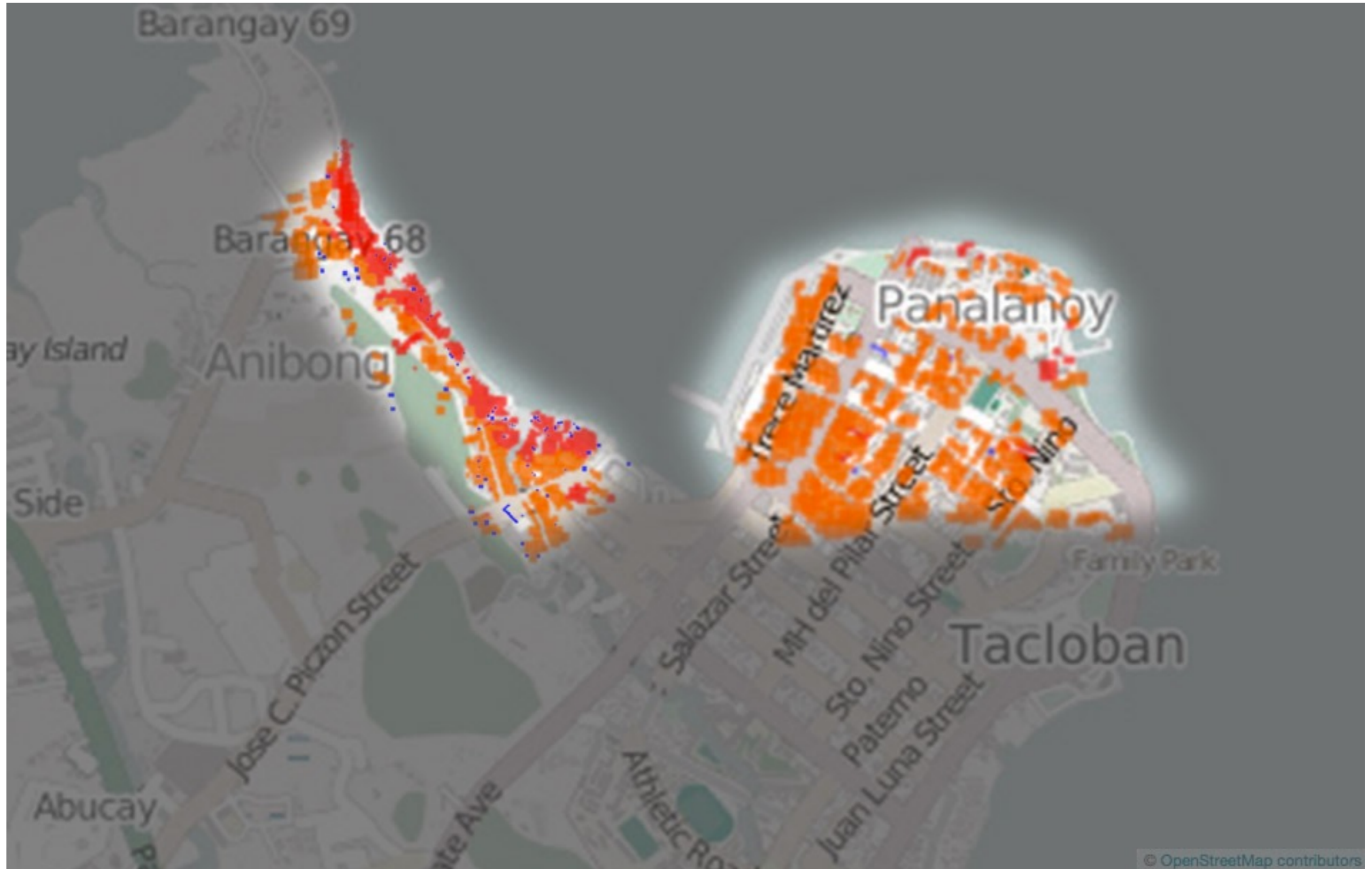
Select and mark any of the following features.

- Crowd of People
- Blocked Road
- Tarp/Shelter
- Flooding
- Structural damage

OK

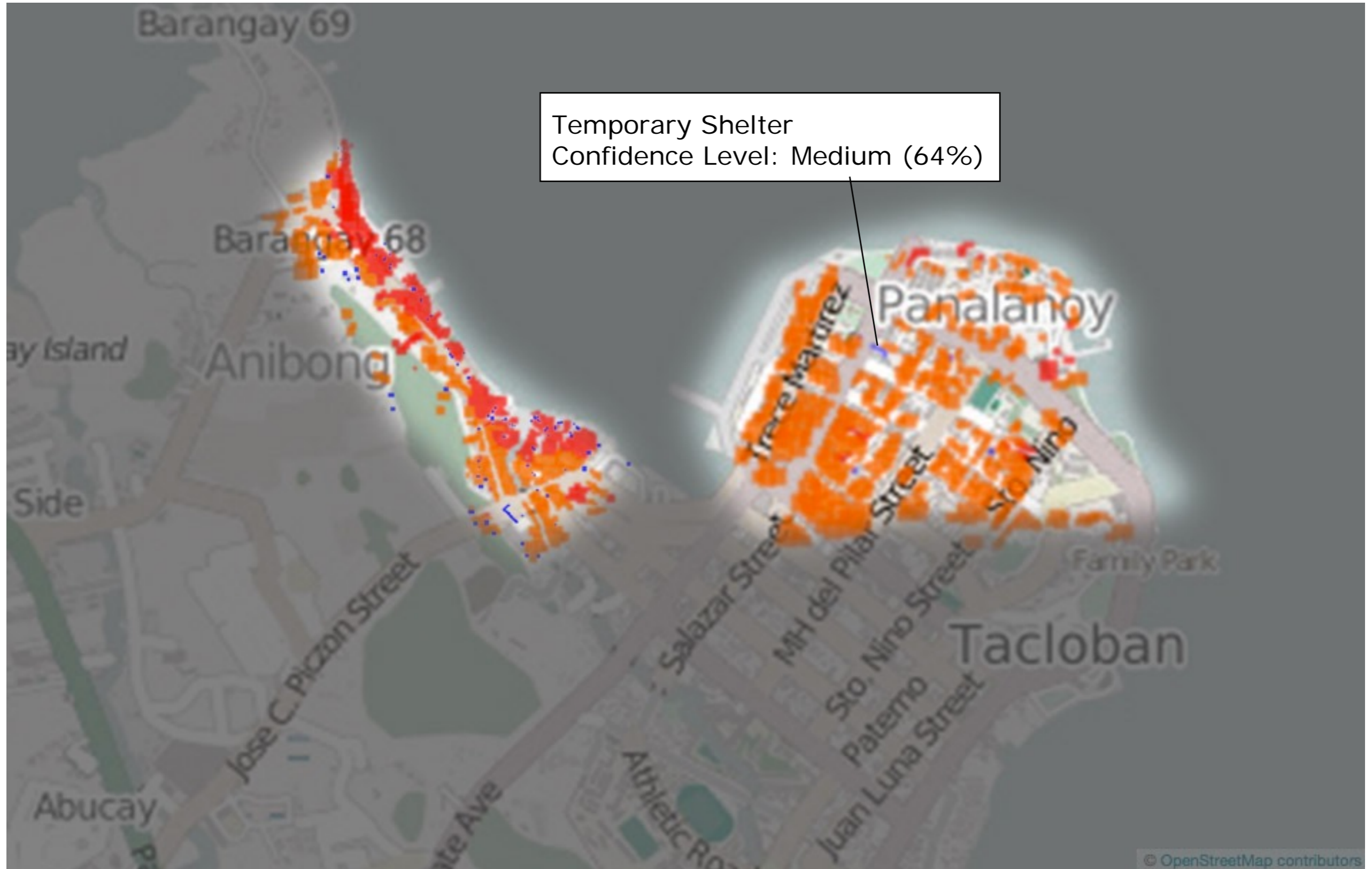


# Design • Scale • Results



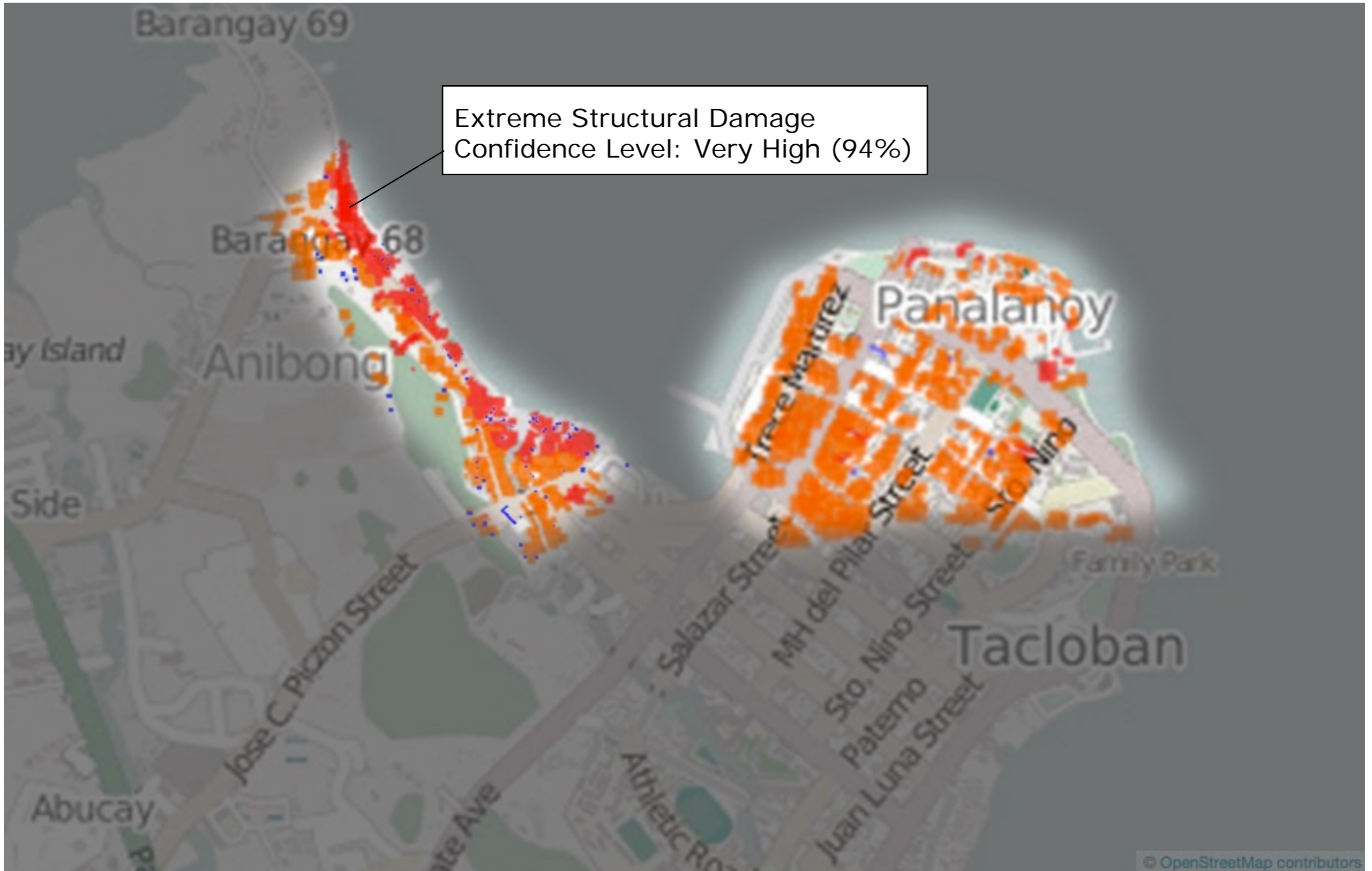


# Design • Scale • Results





# Design • Scale • Results









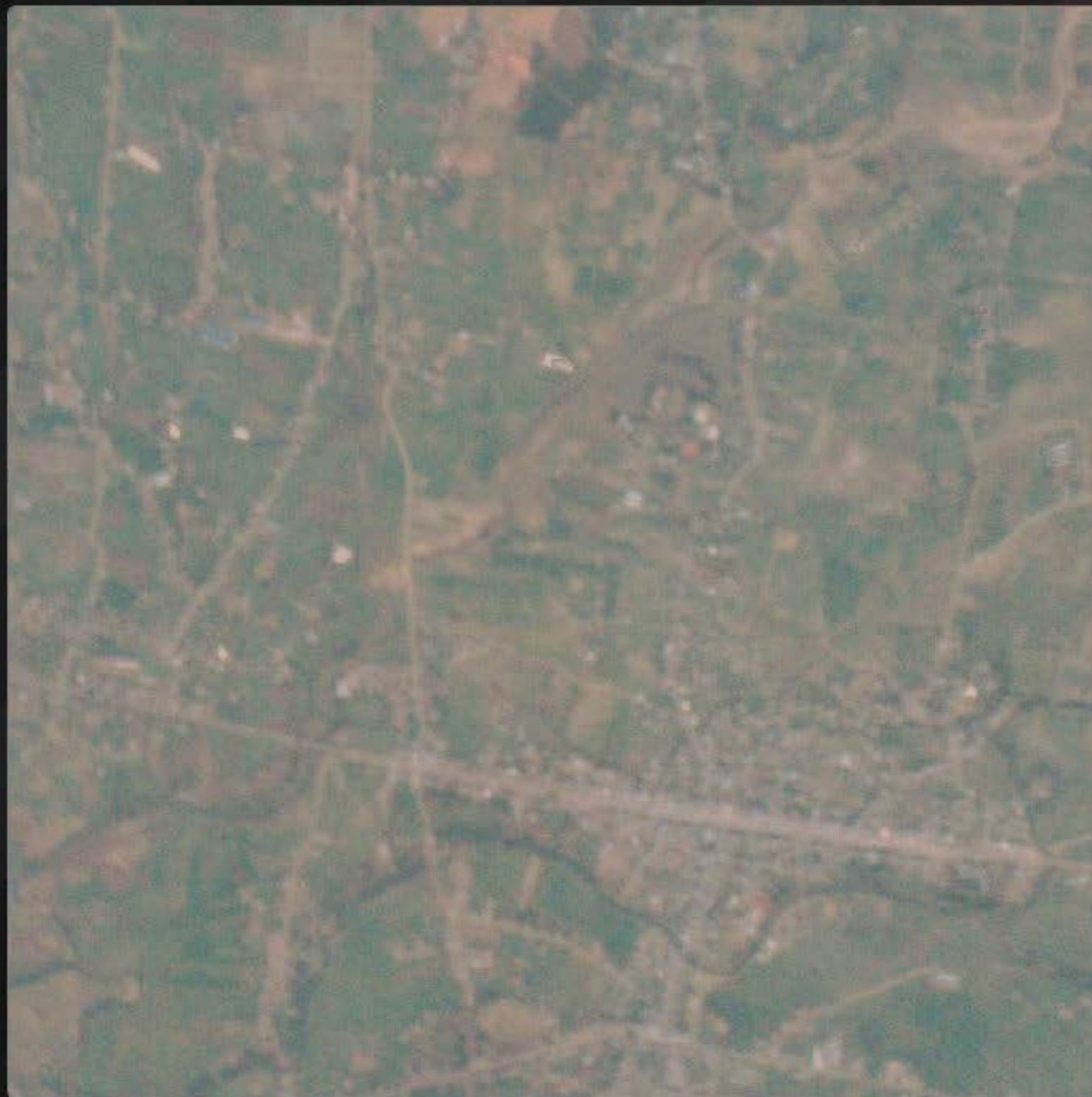
RESCUE GLOBAL NEPAL 2015

SCIENCE

RESULTS

**CLASSIFY**

DISCUSS



How much of the image is classifiable?

- Not much: 25% or less*
- Some: 25-75%*
- Most: 75% or more, but not 100% (e.g., small clouds)*
- All: 100%*

Need some help?

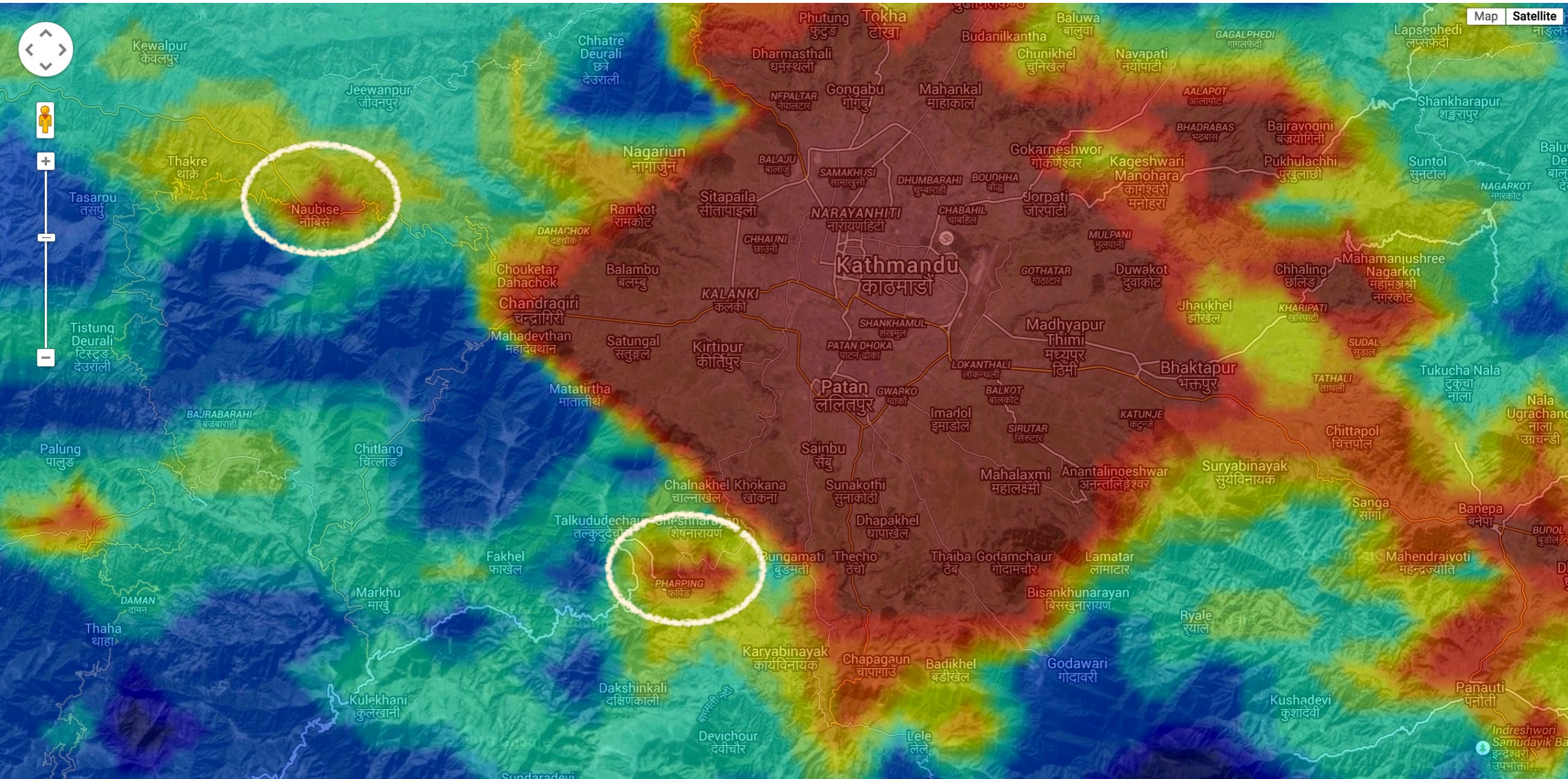
Back

Done

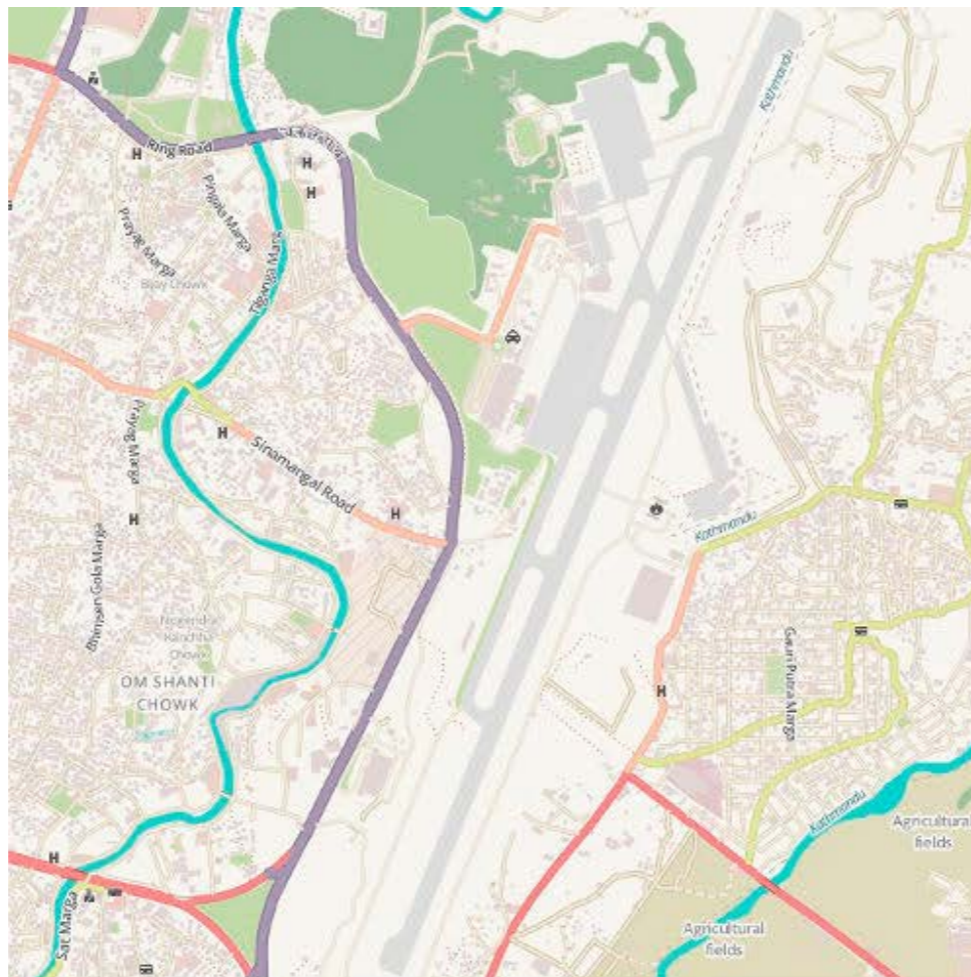




# Design • Scale • Results



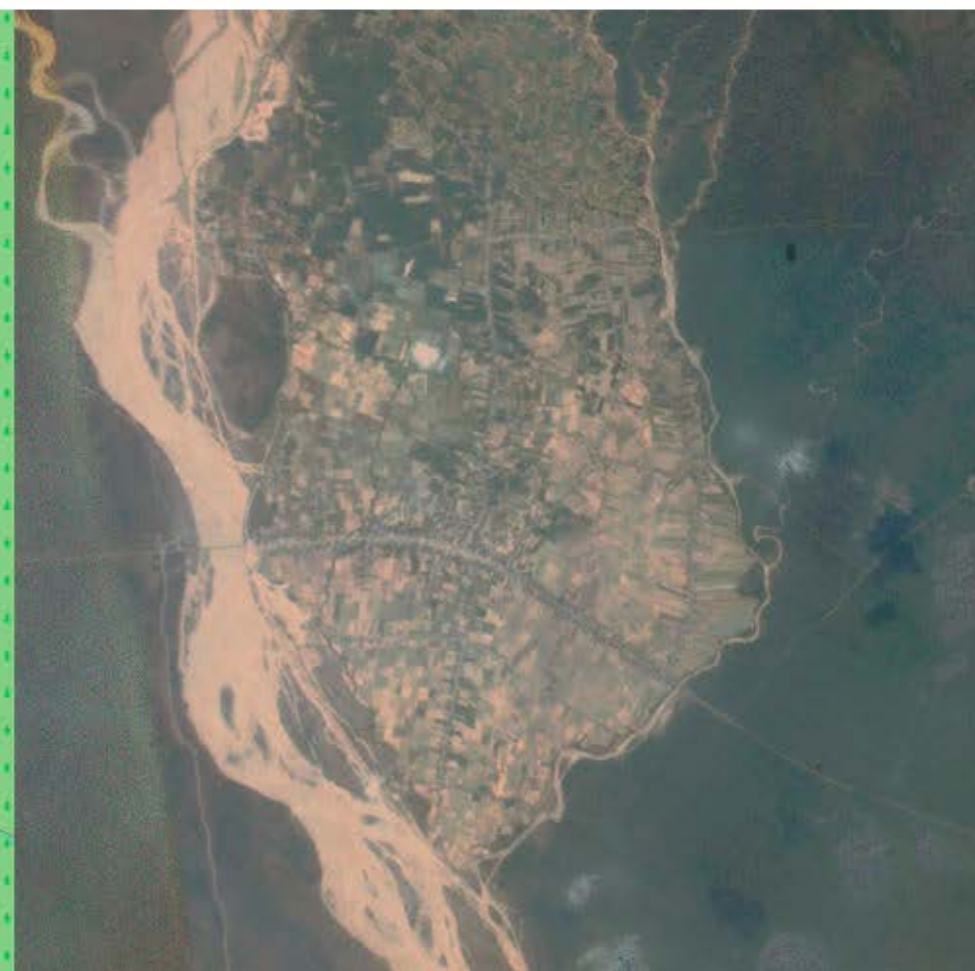
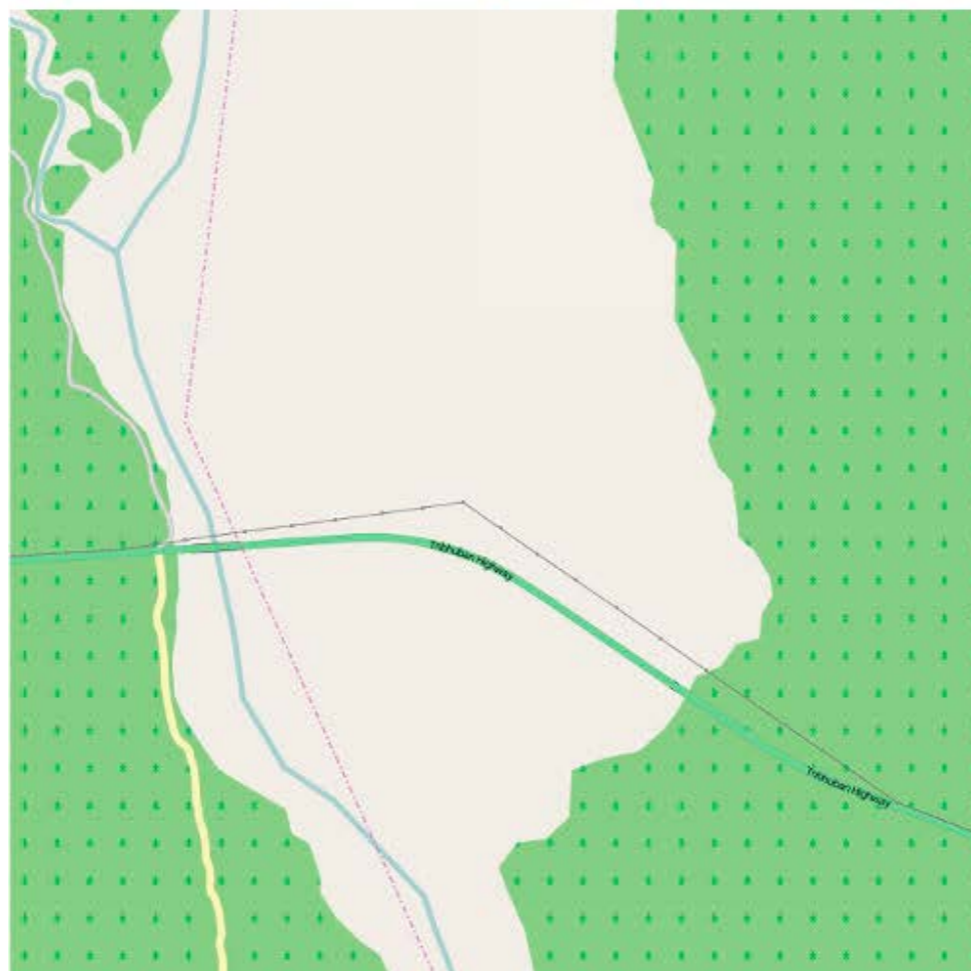
Already mapped area



Satellite image



Unmapped town





# Design • Scale • Results

## Featured discussions

### New blog post : Galaxy Zoo continues to evolve

Posted in Science

23 posts / 5 participants

### Diagonal dustlane

Posted in The Objects

16 posts / 12 participants

### Explore data, do science, and share findings with Zoo Tools

Posted in Science

1 post / 1 participant

### Interface bugs

Posted in Help

138 posts / 37 participants

### Formatting in Posts - HTML, Tags, Smileys, Preview etc.

Posted in Help

5 posts / 3 participants

### New to Galaxy Zoo? Want Help? Read this!

Posted in Help

31 posts / 18 participants

### Tag your galaxies with hashtags

Posted in Help

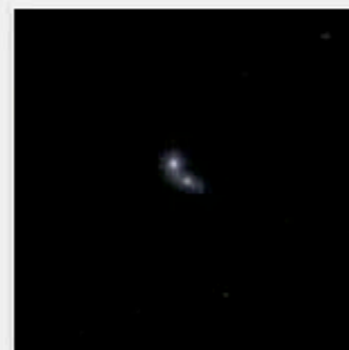
30 posts / 16 participants

## Recent Object Comments...



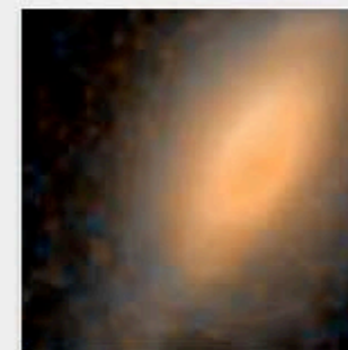
I see 4 uneven soaced arms.- obvious core and blue (star

by john.talbot.astro an hour ago



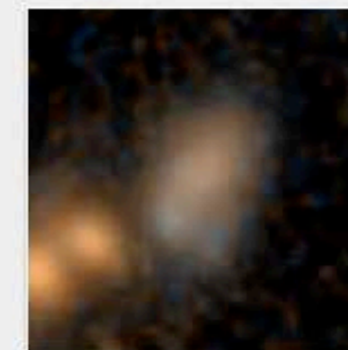
This appears to be two objects merging with different spin

by john.talbot.astro an hour ago



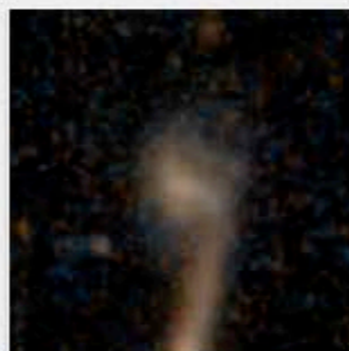
Very bright core and spills out of frame in more than one

by john.talbot.astro an hour ago



central galaxy fairly blue . Two orange ojects at 8 oclock look

by john.talbot.astro an hour ago



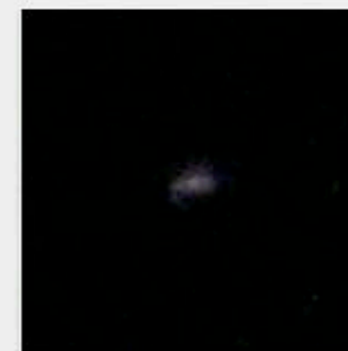
Need to be able to zoom out as signifant parts are off bottom of

by john.talbot.astro 2 hours ago



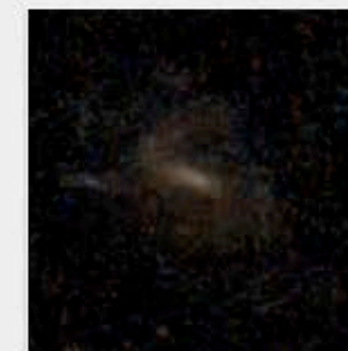
Nice clear letter S in italic script

by john.talbot.astro 2 hours ago



Unusual seeing just one arm

by john.talbot.astro 2 hours ago



central bar, faint but cleararms in early spiral

by john.talbot.astro 2 hours ago

# The community increases discovery & expertise.



# Rapid: Design • Scale • Results



Projects

About

Talk

Collect

Daily Zooniverse

Blog

BUILD A PROJECT

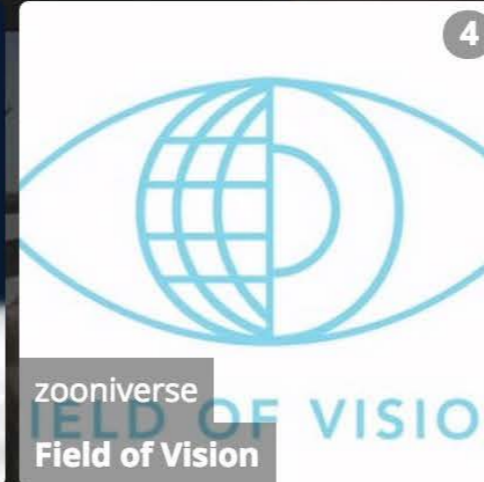
ADMIN

Brooke Simmons



## ZOONIVERSE

Welcome back! Jump into one of your recent projects...



See all your projects

[zooniverse.org/lab](https://zooniverse.org/lab)



# Rapid: Design • Scale • Results



Projects

About

Talk


Collect

Daily Zooniverse

Blog

BUILD A PROJECT

ADMIN

Brooke Simmons 



**KITTEH ZOO**

RESEARCH

CLASSIFY

TALK

BUILD THIS PROJECT

BUILDER POLICIES

BUILDER DISCUSSION



**Classify cats. On the internet. For science.**

[Get started!](#)

[zooniverse.org/lab](https://zooniverse.org/lab)



# Rapid: Design • Scale • Results

[Projects](#)[About](#)[Talk](#)[Collect](#)[Daily Zooniverse](#)[Blog](#)[BUILD A PROJECT](#)[ADMIN](#)[Brooke Simmons](#)

## PROJECT #4

### Project details

[Research](#)[Results](#)[FAQ](#)[Education](#)[Collaborators](#)[Media](#)[Visibility](#)[Talk](#)[Data Exports](#)

## WORKFLOWS

[Cat me!](#)[New workflow](#)

## SUBJECT SETS

[Kittens](#)[Untitled subject set](#)[New subject set](#)[Delete this project](#)

Input the basic information about your project, and set up its home page.

### Avatar



Pick a logo to represent your project. To add an image, either drag and drop or click to open your file viewer. For best results, use a square image of not more than 50 KB.

### Background image



This image will be the

### NAME

The project name is the first thing people will see about the project, and it will show up in the project URL. Try to keep it short and sweet. Your project's URL is [/projects/vrooje/kitteh-zoo](#)

### DESCRIPTION

This should be a one-line call to action for your project that displays on your landing page. Some volunteers will decide whether to try your project based on reading this, so try to write short text that will make people actively want to join your project.

### INTRODUCTION



Cats are great. Where would we be without them? Missing a lot of Egyptian art, that's for sure.

But we need to know more. Can you help us?

*\*Note\**: this is just a demonstration project.

# zooniverse.org/lab





# Rapid: Design • Scale • Results

[Projects](#)[About](#)[Talk](#)[Collect](#)[Daily Zooniverse](#)[Blog](#)[BUILD A PROJECT](#)[ADMIN](#)[Brooke Simmons](#)

## PROJECT #4

[Project details](#)[Research](#)[Results](#)[FAQ](#)[Education](#)[Collaborators](#)[Media](#)[Visibility](#)[Talk](#)[Data Exports](#)

## WORKFLOWS

[Cat me!](#)[New workflow](#)

## SUBJECT SETS

[Kittens](#)[Untitled subject set](#)[New subject set](#)[Delete this project](#)

A workflow is the sequence of tasks that you're asking volunteers to perform. For example, you might want to ask volunteers to answer questions about your images, or to mark features in your images, or both.

### WORKFLOW TITLE

If you let your volunteers choose which workflow to attempt, this text will appear as an option on the project front page.

### TASKS

Mark each cat's face and tail. Draw an ellipse around each cat's face (not including the ears), and mark the tail tip with a point.

**How many cats are there in this image? (first)**

[+ Add a task](#)

First task

A task is a unit of work you are asking volunteers to do. You can ask them to answer a question or mark an image. Add a task by clicking the question or marking buttons below.

Version 5.4

Version indicates which version of the workflow you are on. Every time you

### MAIN TEXT

Describe the task, or ask the question, in a way that is clear to a non-expert. You can use markdown to format this text.

### HELP TEXT

Tell us **how many cats** you see. You should include:

- Actual cats (not drawn or simulated)
- Cats of any species

We will ask many people the same question about this image, so don't worry if you aren't absolutely sure. **\*Just give us your best guess.\***

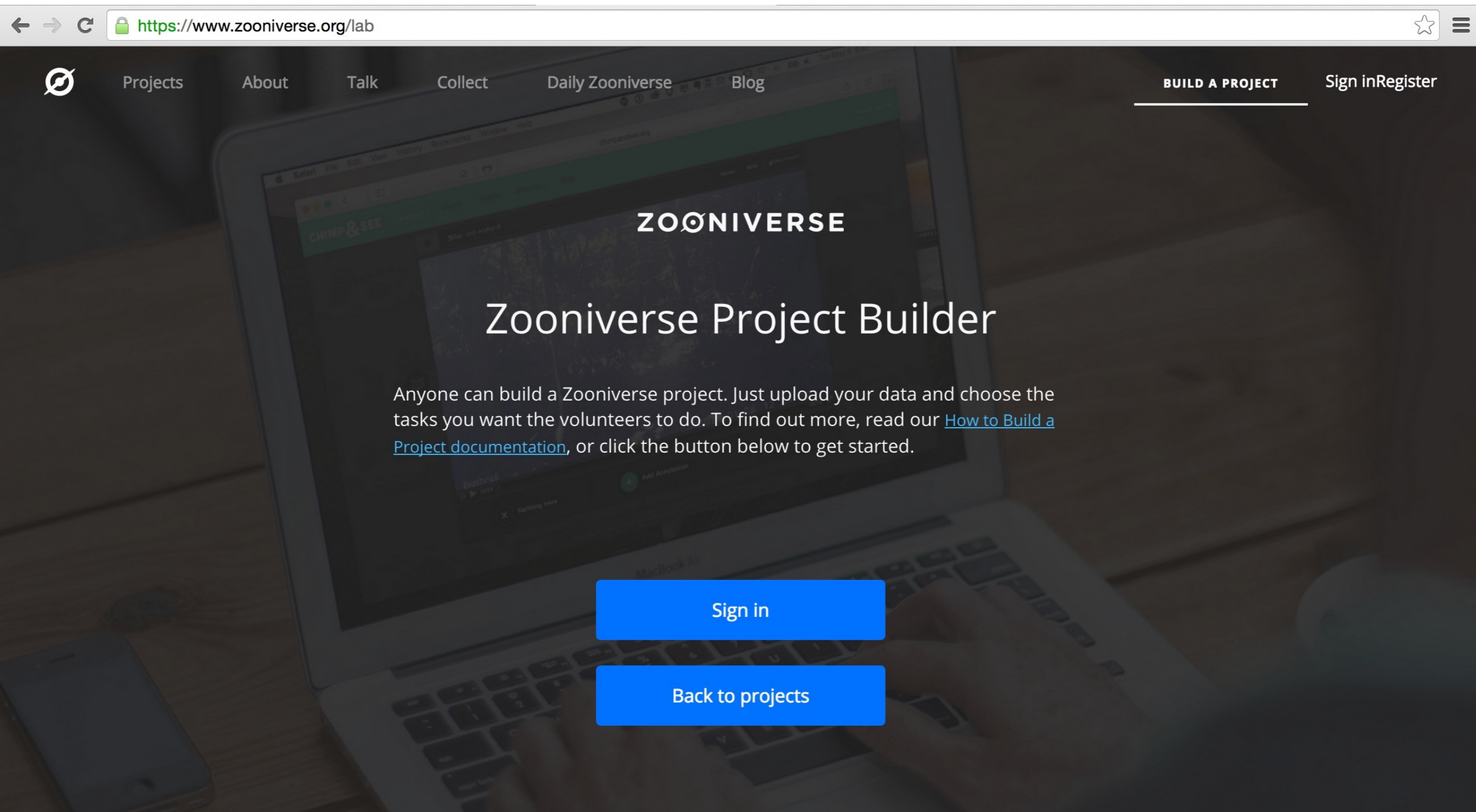
Add text and images for a window that pops up when volunteers click "Need some help?" You can use markdown to format this text and add images. The help text can be as long as you need, but you should try to keep it simple and avoid jargon.

CHOICES  Allow multiple  Required

# zooniverse.org/lab



# Build your own Zooniverse project

A screenshot of a web browser showing the Zooniverse Project Builder page. The browser's address bar displays 'https://www.zooniverse.org/lab'. The page features a dark background with a laptop displaying the Zooniverse interface. The main heading is 'Zooniverse Project Builder'. Below it, a paragraph explains that anyone can build a project by uploading data and choosing tasks for volunteers. A link to 'How to Build a Project documentation' is provided. Two blue buttons, 'Sign in' and 'Back to projects', are positioned at the bottom of the main content area. The navigation menu at the top includes 'Projects', 'About', 'Talk', 'Collect', 'Daily Zooniverse', and 'Blog'. On the right side, there are links for 'BUILD A PROJECT', 'Sign in', and 'Register'.

← → ↻ <https://www.zooniverse.org/lab> ☆ ☰

Projects About Talk Collect Daily Zooniverse Blog **BUILD A PROJECT** Sign in Register

## ZOOIVERSE

### Zooniverse Project Builder

Anyone can build a Zooniverse project. Just upload your data and choose the tasks you want the volunteers to do. To find out more, read our [How to Build a Project documentation](#), or click the button below to get started.

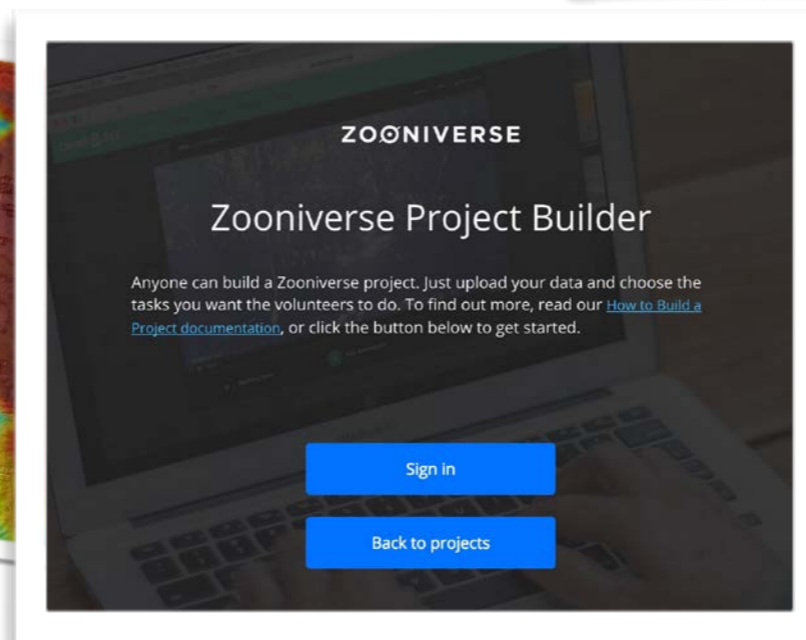
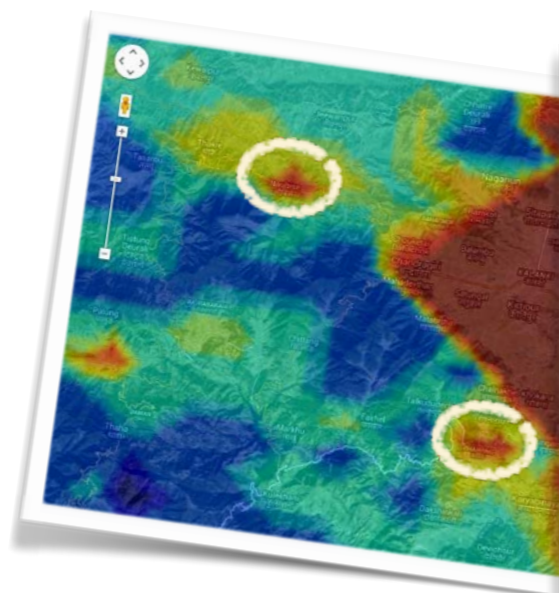
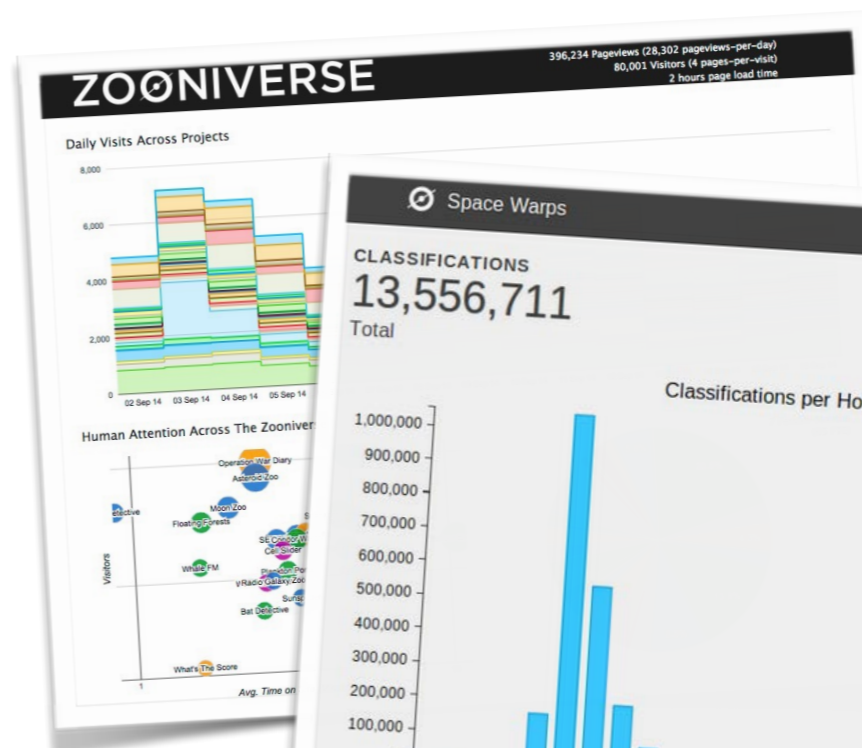
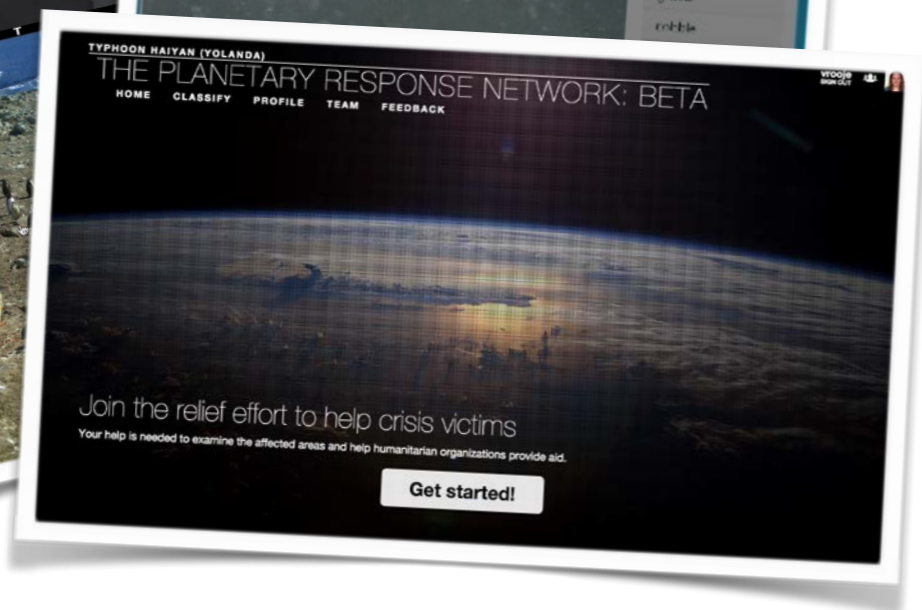
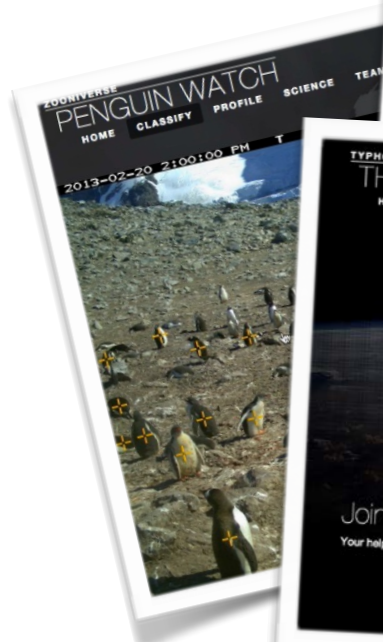
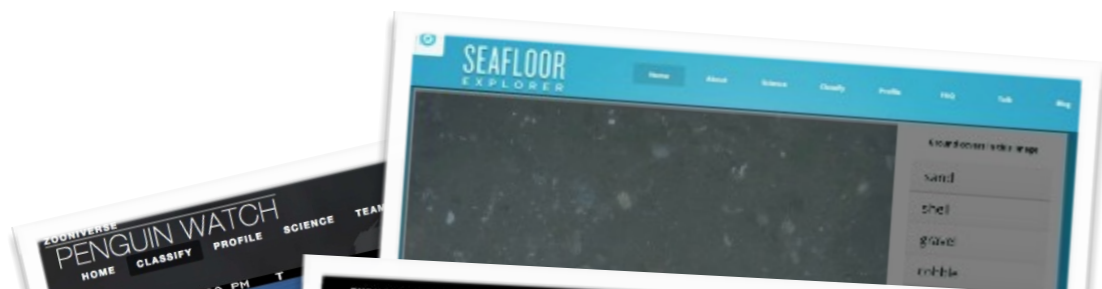
Sign in

Back to projects

[zooniverse.org/lab](https://www.zooniverse.org/lab)



# What do you want to build?



[zooniverse.org](http://zooniverse.org)

[github.com/zooniverse](https://github.com/zooniverse)

# Gamified or Gamised?

