

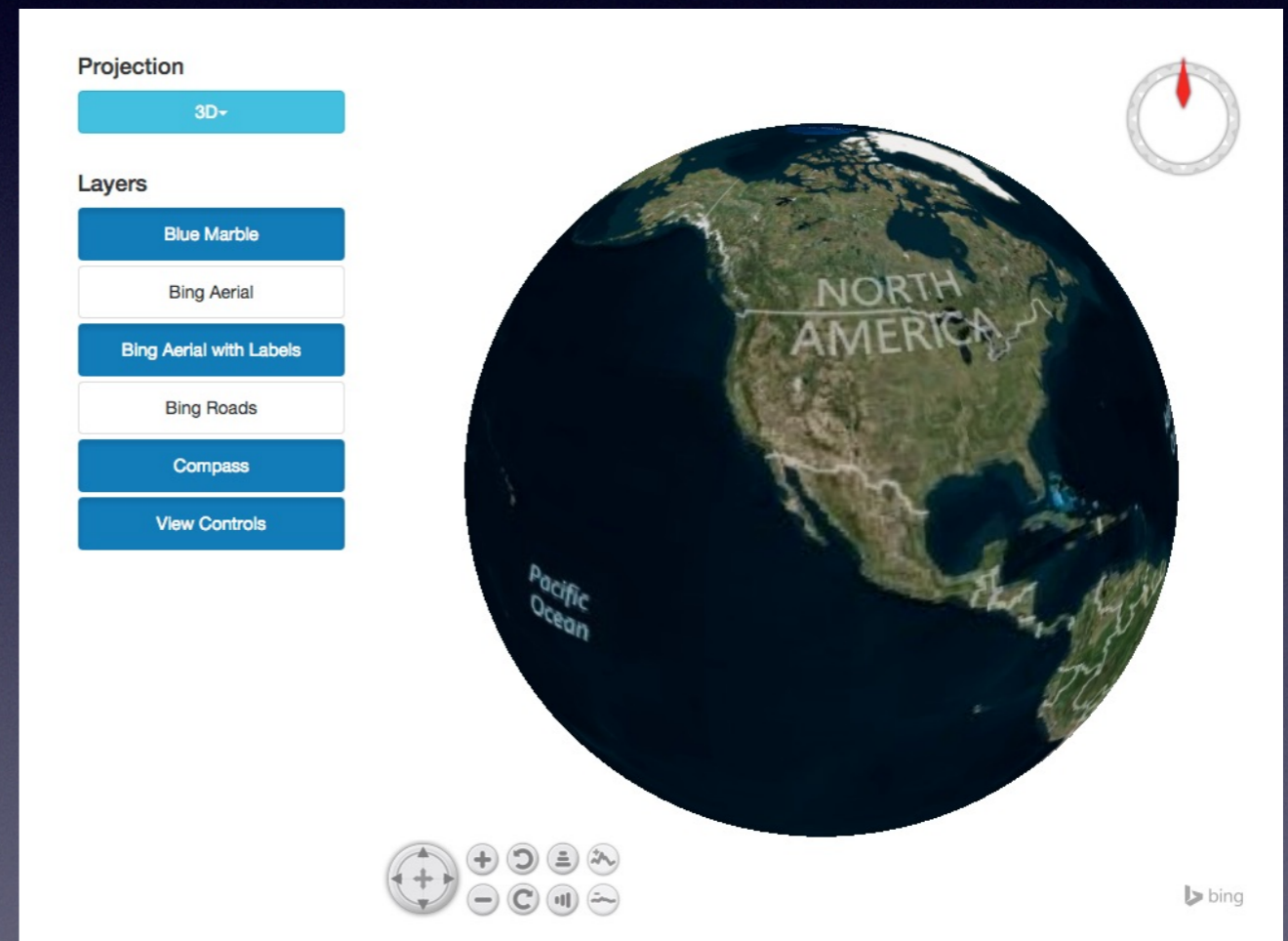
NASA World Wind

Dave Collins

paul@paulcollinssoftware.com

World Wind Is

- Open-Source Virtual Globe
- Library to Use in Applications and Web Pages
- An Application Component
 - Not an App in Itself
- Cross-Platform
- Java, JavaScript/HTML5



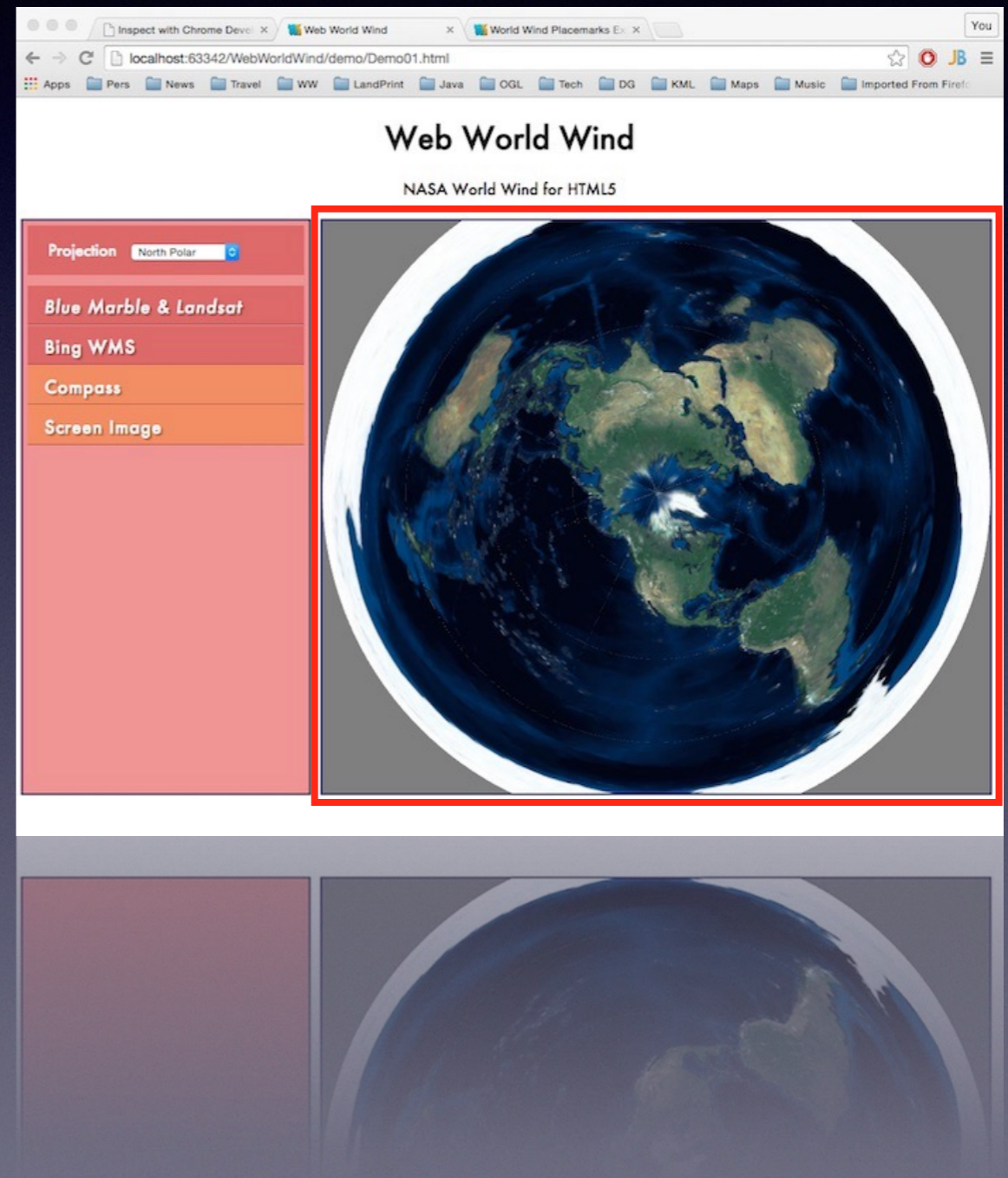
World Wind Provides

- Geographic Context for Data and Information Visualization
- Rich Set of Shapes and Graphics Primitives
- Data Import From Local, Web, Cloud, Database, OSM,...
- Viewing, Picking, Scene Control
- Platform Independence



App Component

- Element in Web Page or App
- Component of App
- Place Anywhere
- Multiple Locations
- Single Library
- Virtual Globe API with Terrain



World Wind Explorer

Projection

3D ▾

Layers

Blue Marble

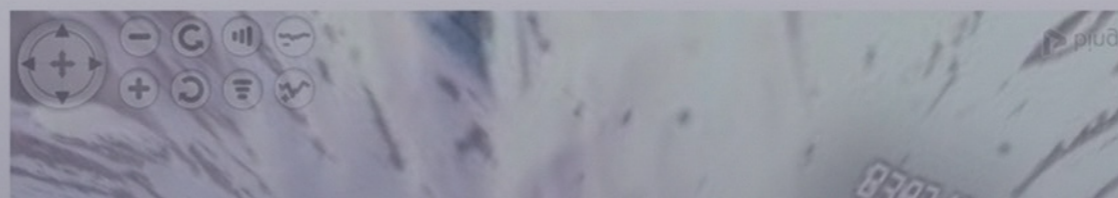
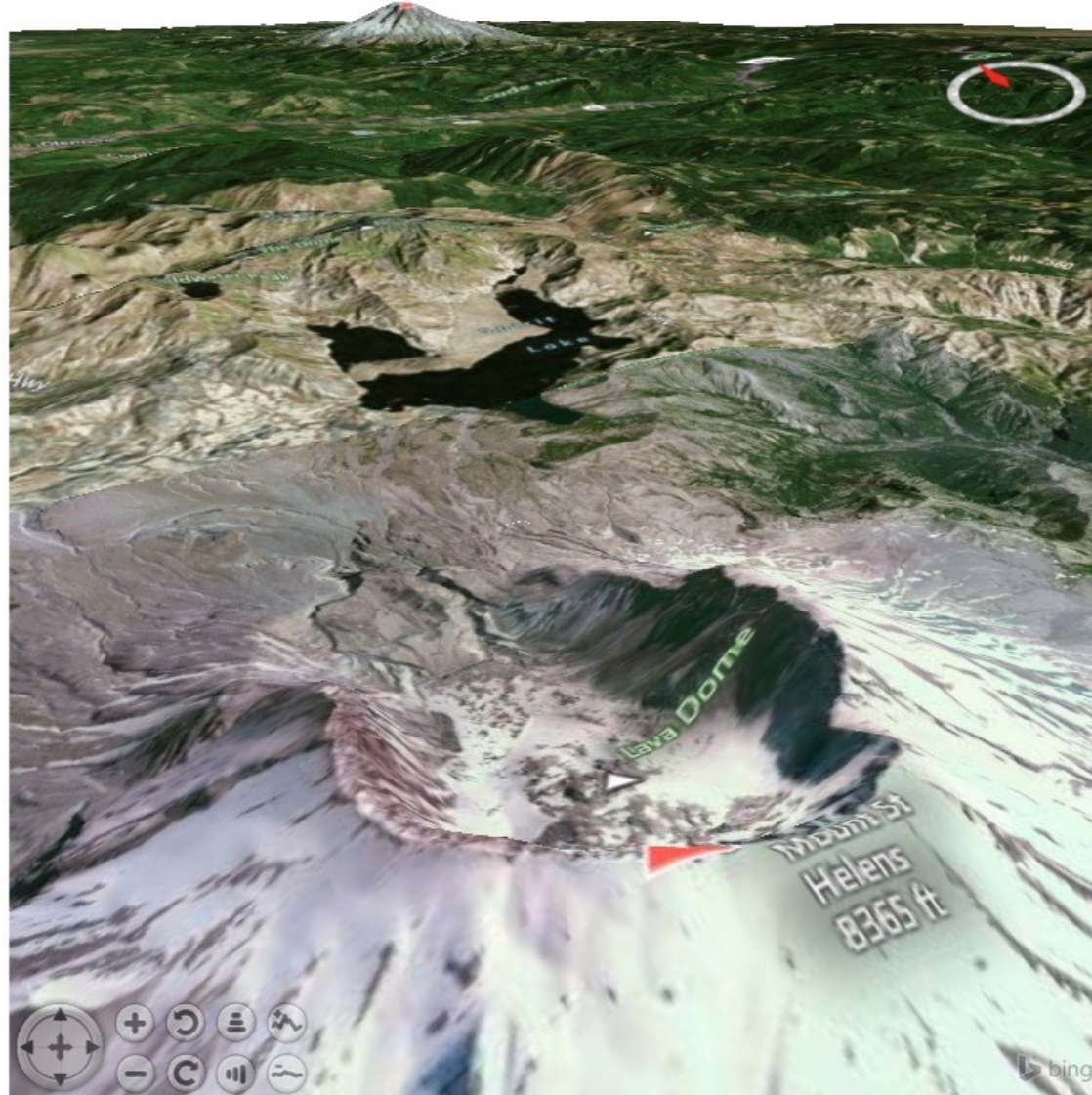
Blue Marble & Landsat

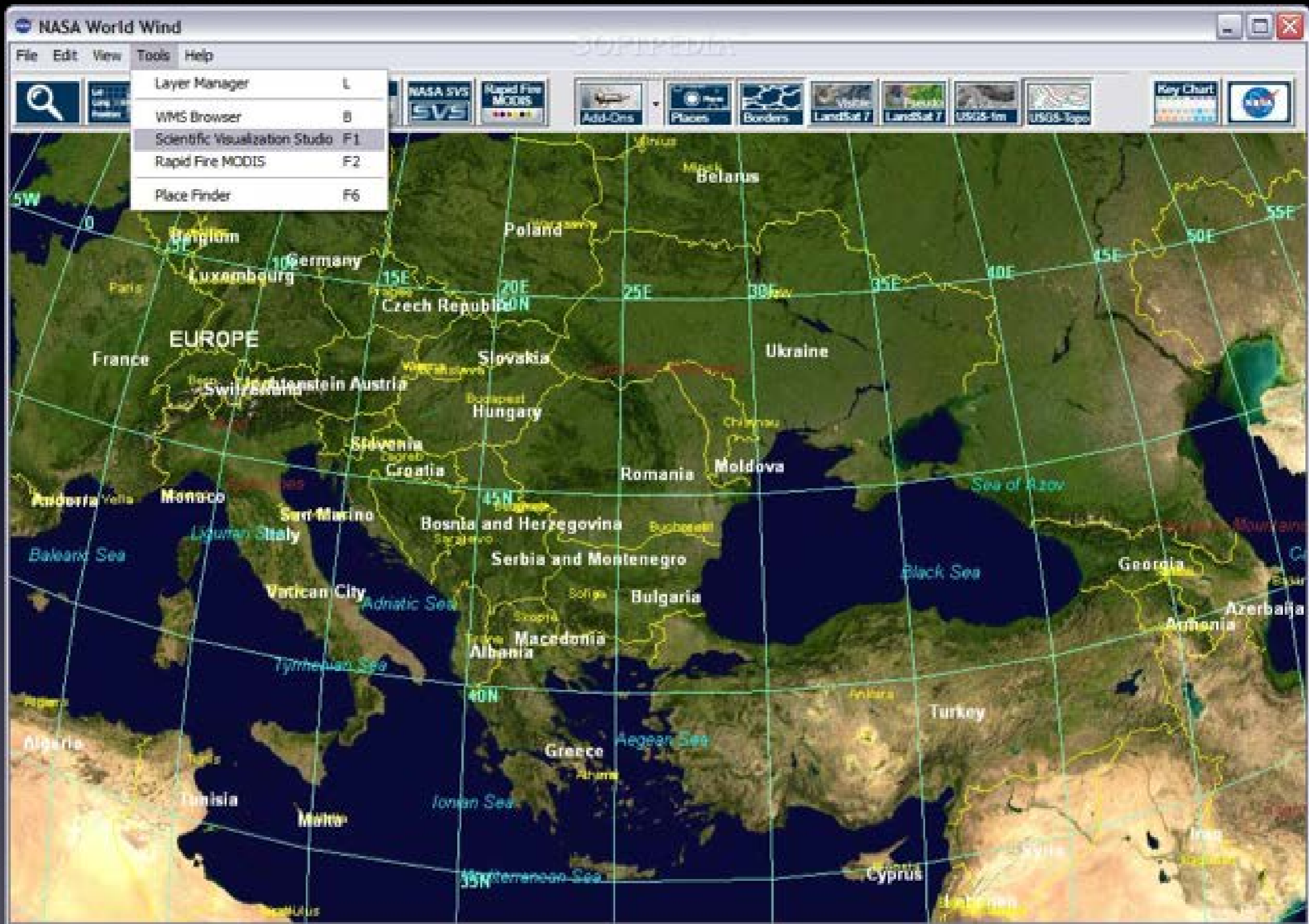
Bing Aerial with Labels

Compass

View Controls

Menu 1 Menu 2 ▾ Menu 3 Menu 4







Layers

- Terrain
- Weather
- Profiles
- Tracks
- Overlays

240

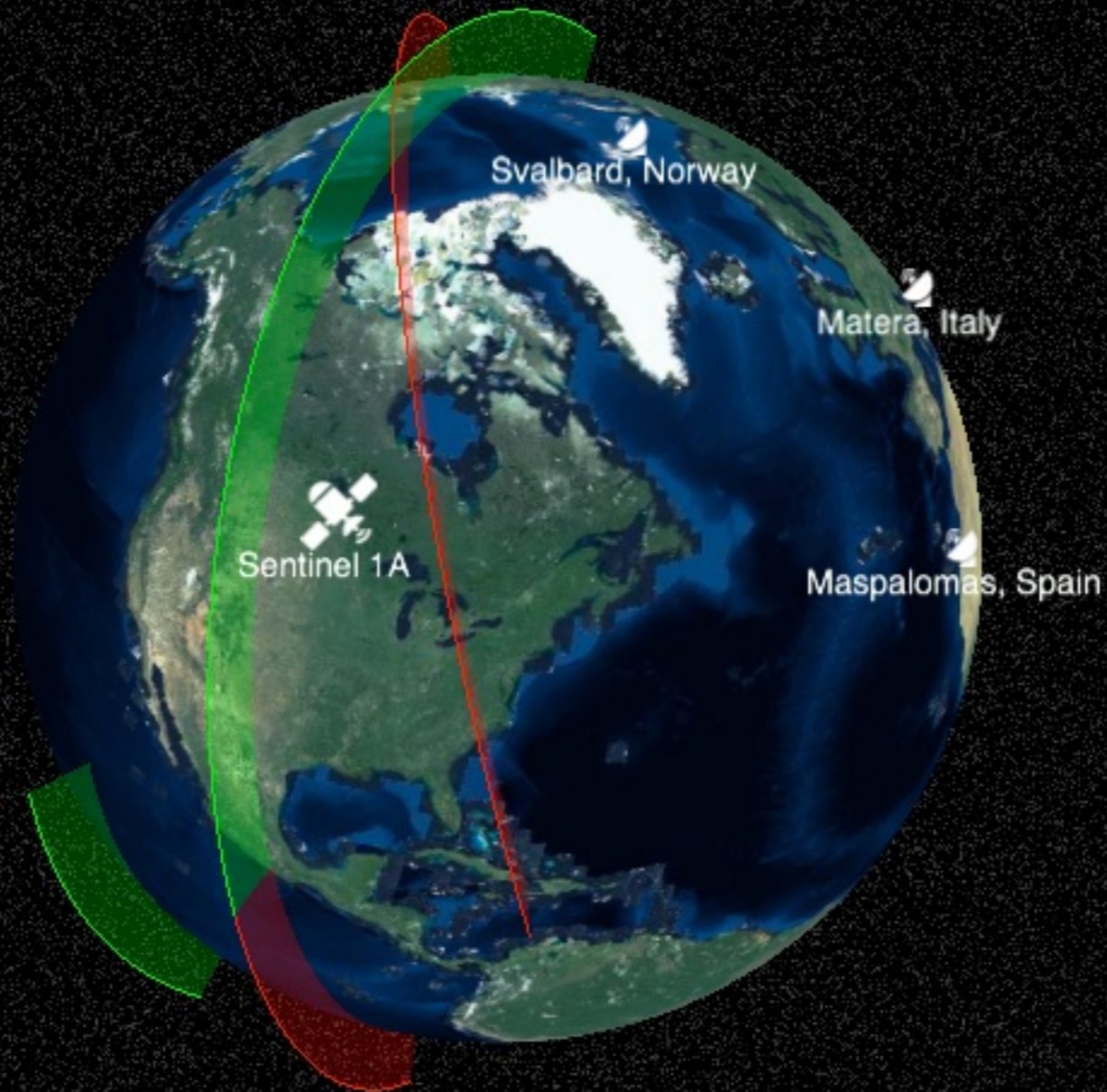
20 mile(s)

15:04:15L 20:04:15Z

Simple Sentinel-1A Tracker

Latitude: 47° 57' 34.62" N | Longitude: 94° 36' 24.18" W | Altitude: 703.02km

[Help](#) | Representation: [3D](#) | Follow: [Off](#)



Built by Yann Voumard with [Web World Wind](#), [Satellite JS](#) and icons made by [Freepik](#) from [www.flaticon.com](#).

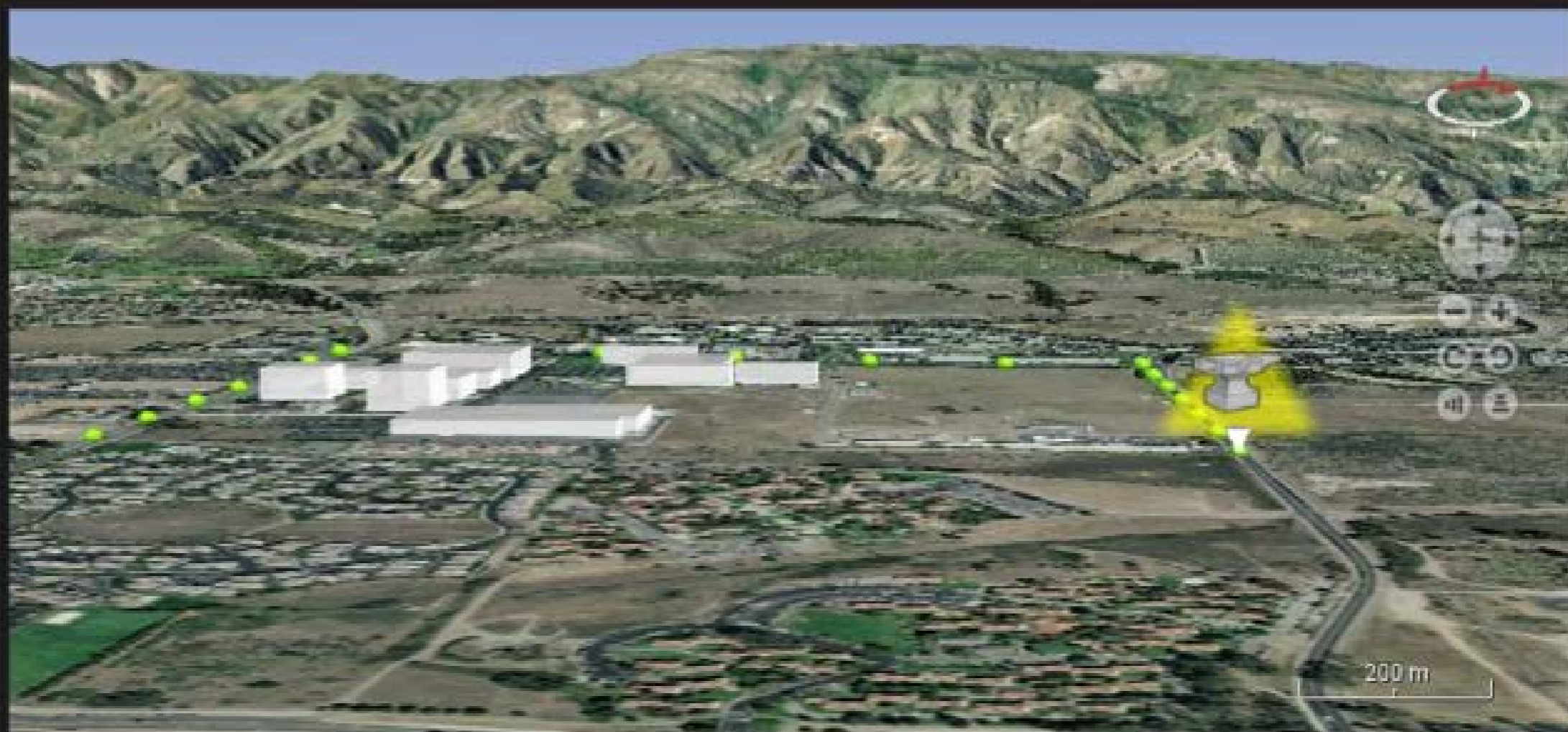
RaptorX 1.4 : 2010_03_16_08_41_47

File View Data Imagery Tools Help

Map Objects
Icons
Layers
Map Tools
Connections
Channels

Event Log
Favorites
Files
Apps
Tracking

Globe

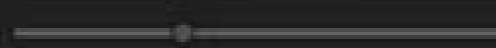


Decimal Degrees Lat 34.48953° Lon -119.86604° Elev 502m

Eye Alt: 220 m Heading: -4° No Network

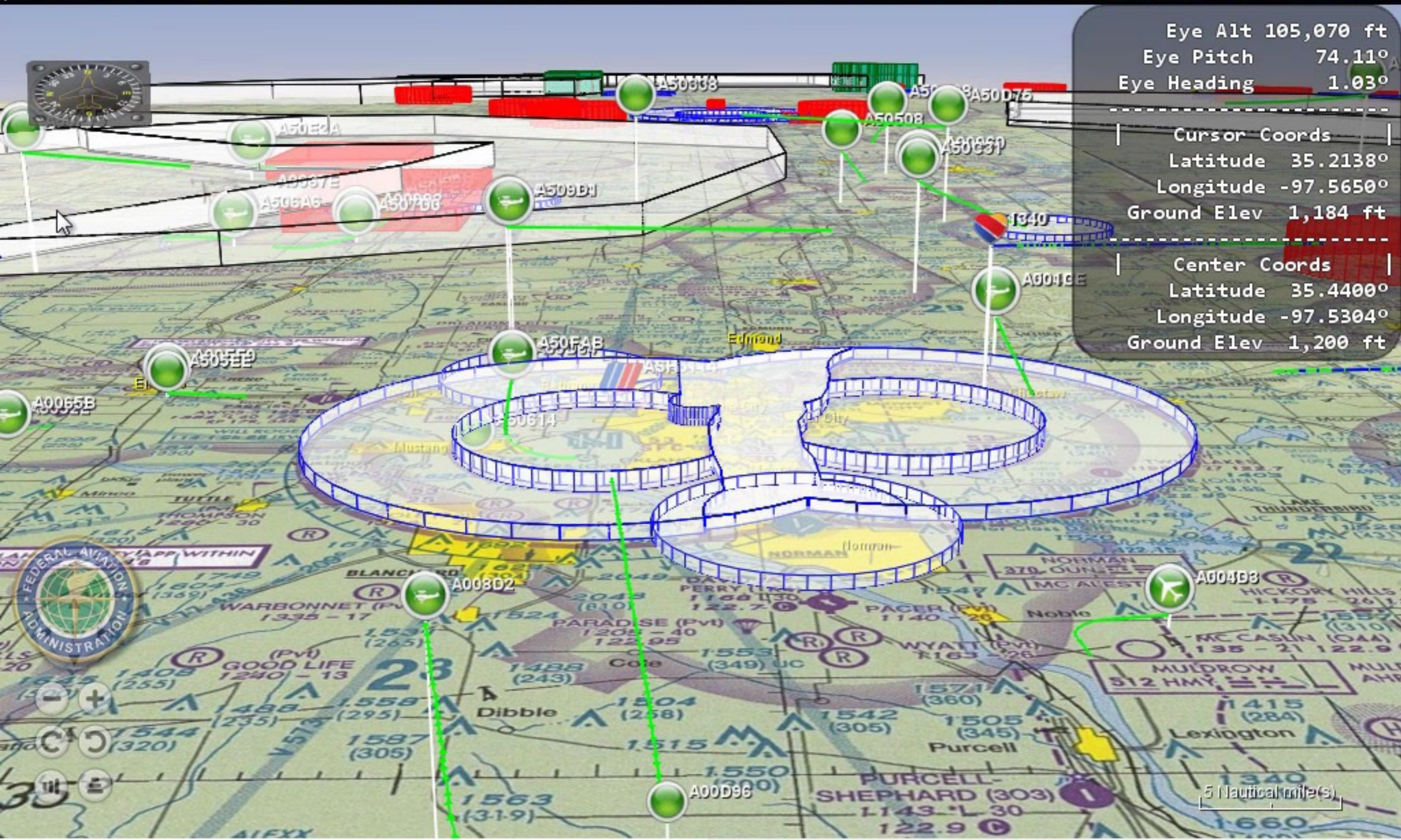
tx rx

Audio Alert On: All Alerts



Security Filter: High

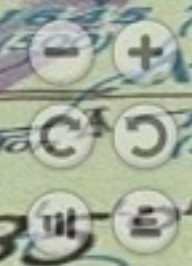
2010-03-16 15:46:07 UTC



Eye Alt	105,070 ft
Eye Pitch	74.11°
Eye Heading	1.03°

Cursor Coords	
Latitude	35.2138°
Longitude	-97.5650°
Ground Elev	1,184 ft

Center Coords	
Latitude	35.4400°
Longitude	-97.5304°
Ground Elev	1,200 ft



5 Nautical mile(s)

Potential Fire Behavior Simulation - Ventura

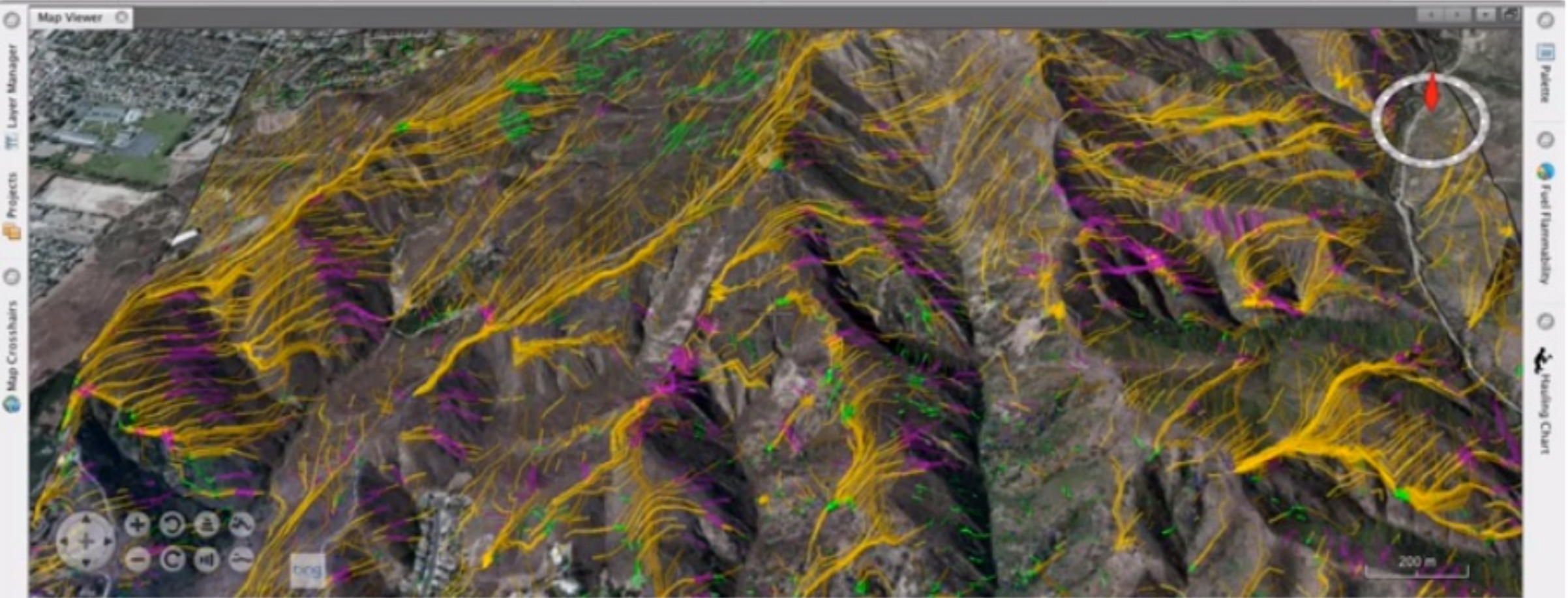
Tools View Window Help

100% Mon 9:42 AM Bruce Schubert

Cps5 - NetBeans Platform 7.3

File Home Analysis Tools

Projects	Edit Design	Marker	New Scene Screenshot	Goto Place... Restore Scene	Basemap Overlays	Layer Manager Add Web Maps	Zoom In Zoom Out	Move	Rotate
Project	Edit	Create	Find	Map	Zoom	Move	Rotate		

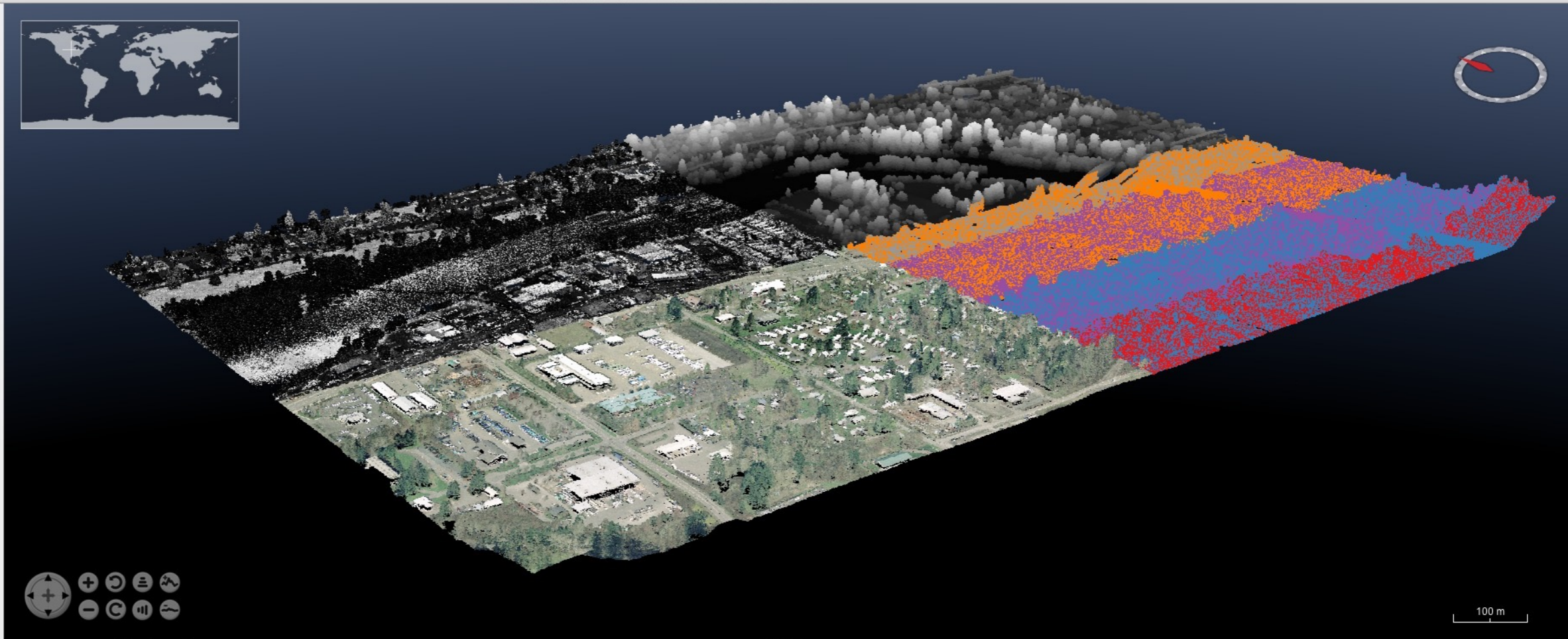


TimeAnimation Window

Mon May 20 09:00:44 PDT 2013

D09, D10, C09, C10, D09-00, D10-01, C09-02, C10-03

- Layers
- Stars
 - Atmosphere
 - NASA Blue Marble Image
 - Blue Marble (WMS) 2004
 - i-cubed Landsat
 - USDA NAIP
 - USDA NAIP USGS
 - MS Virtual Earth Aerial
 - USGS Topographic Maps 1:250K
 - USGS Topographic Maps 1:100K
 - USGS Topographic Maps 1:24K
 - USGS Urban Area Ortho
 - Political Boundaries
 - Place Names
 - World Map
 - Scale bar
 - View Controls
 - D09
 - D09-00
 - D10
 - D10-01
 - C09
 - C09-02
 - C10
 - C10-03
 - Compass

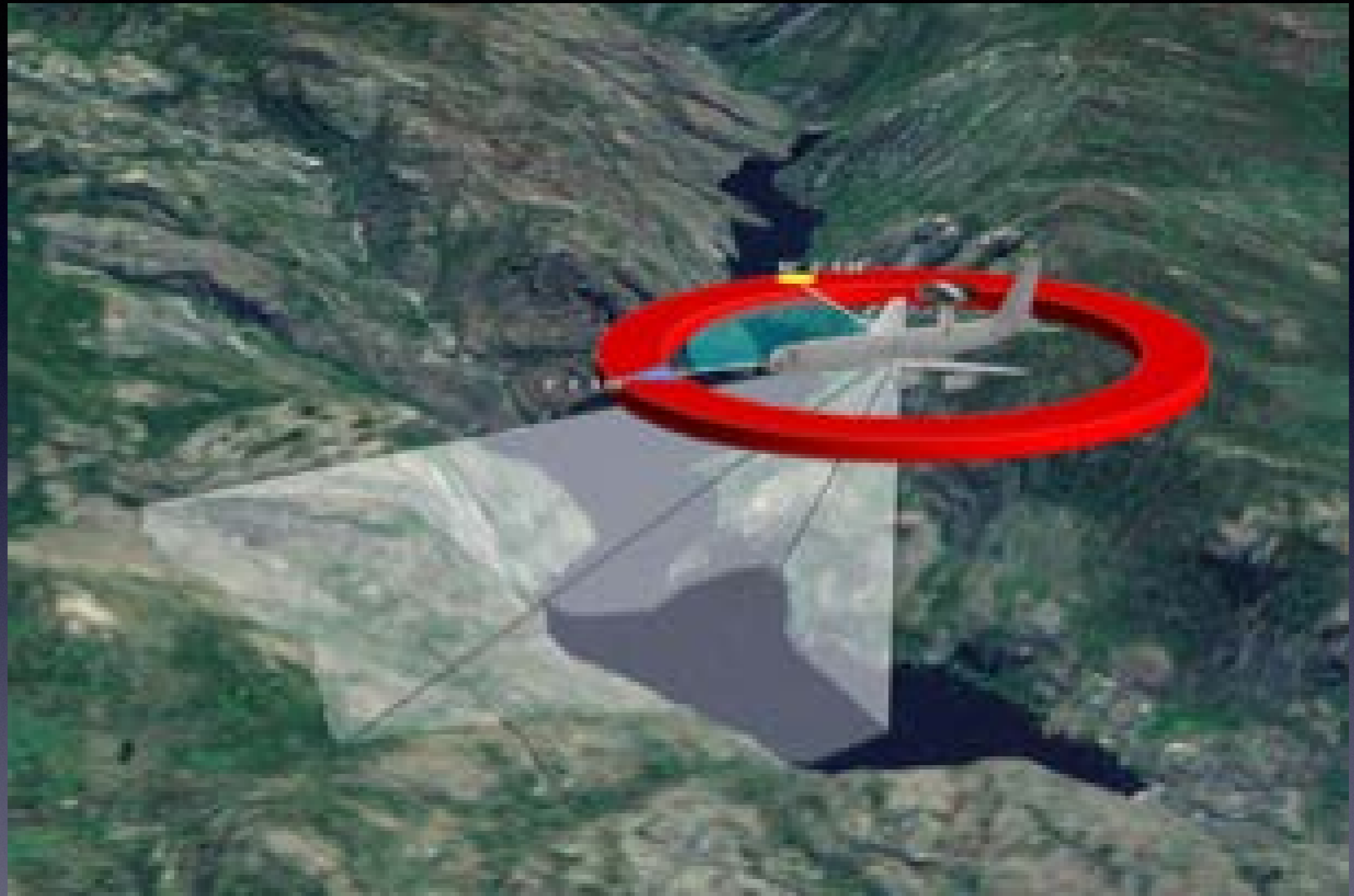


Altitude 1 km

Off Globe

Operations Create Point Cloud Create Elevation Model

100 m



Layer Control

Base Layer: Blue Marble

Data Layer

- 2D Dust Layer
- 2D Dust Animation Layer
- 3D Dust Animation Layer

2D Dust Layer Data Properties

Display Variable: acp

Opacity: 0.9

2D Animation Control

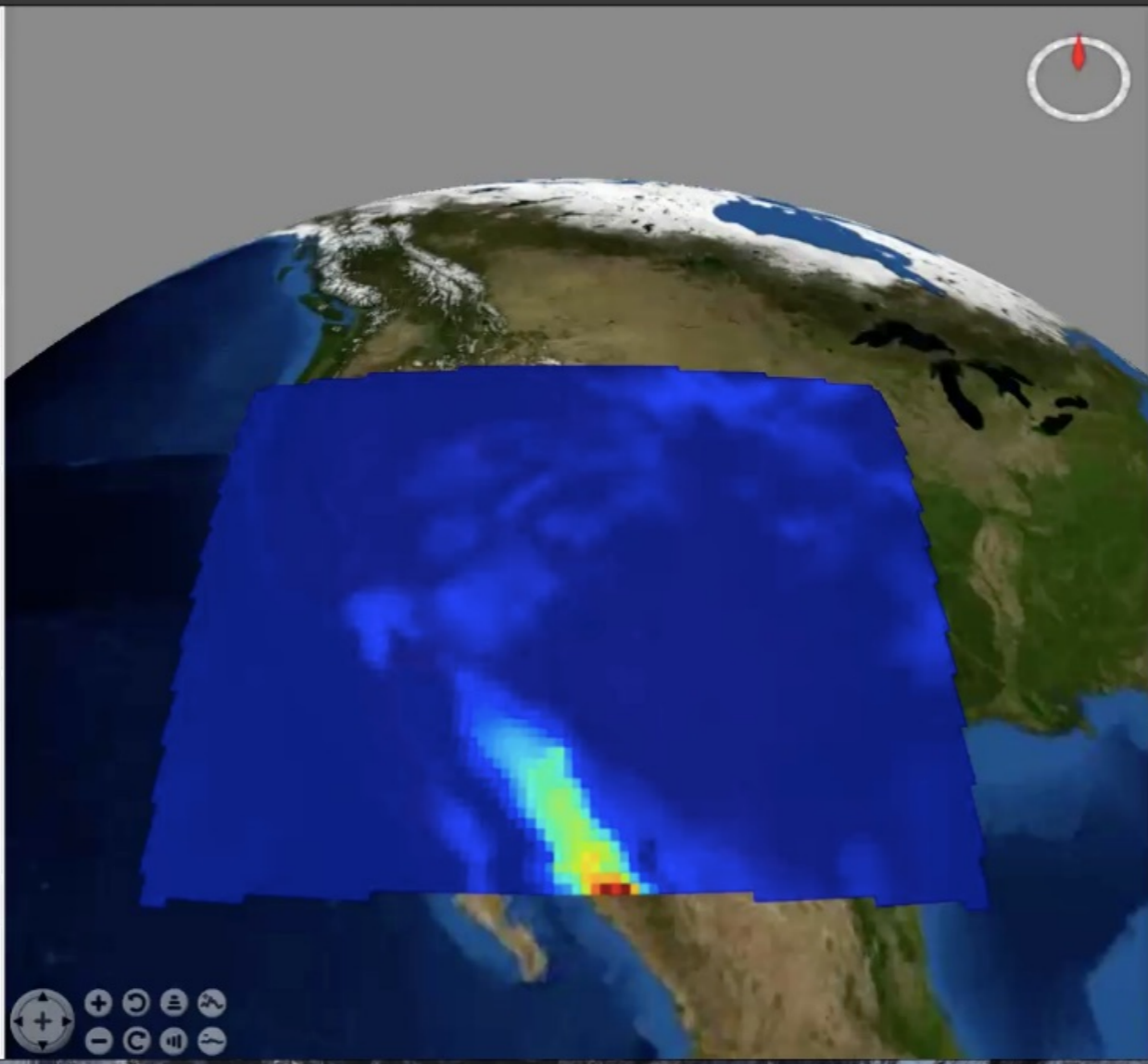
Time point: 24

3D Animation Control

Time point: 0

Place Marker

Lat: 0 Long: 0 Alt (m): 0 Add



Cloud Configuration

Server Region

Amazon EC2 Region: US East (N. Virginia)

Machine Configuration

Instance Type: m3.xlarge

Resources Allocation

Number of Processors: 4

Start Application

Data Source

Data on Server

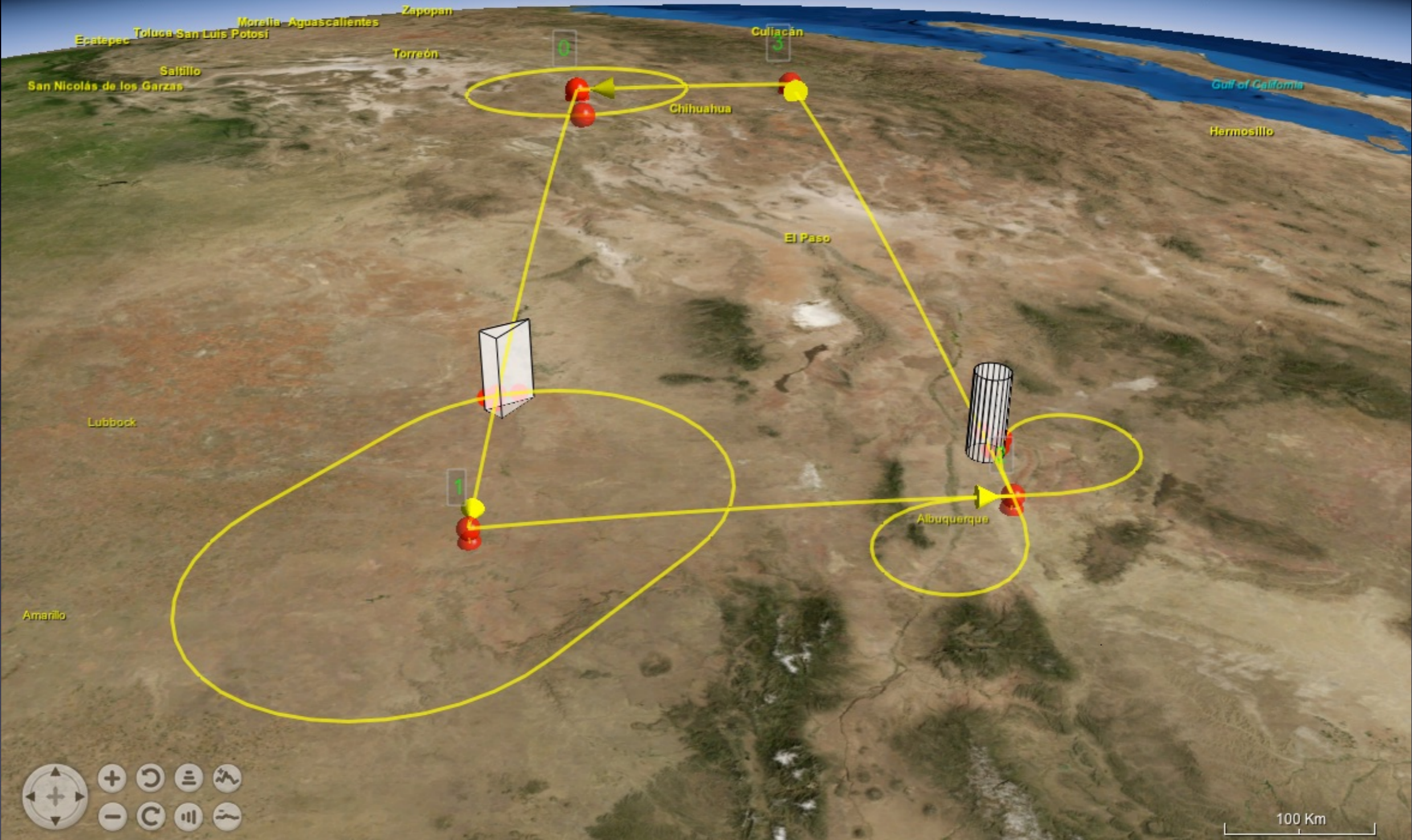
/root/data/ dust2d.nc

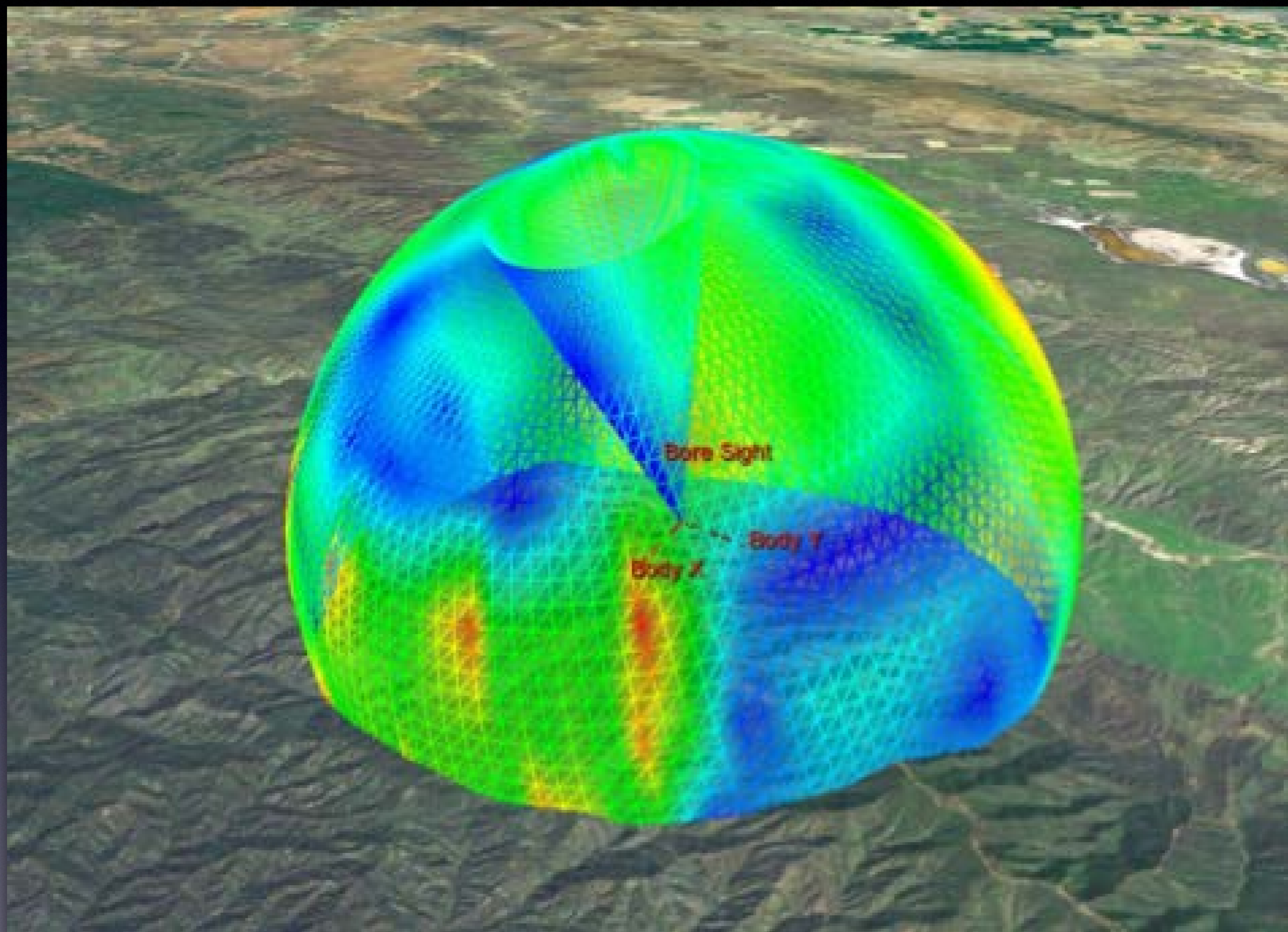
OPeNDAP Server - NASA

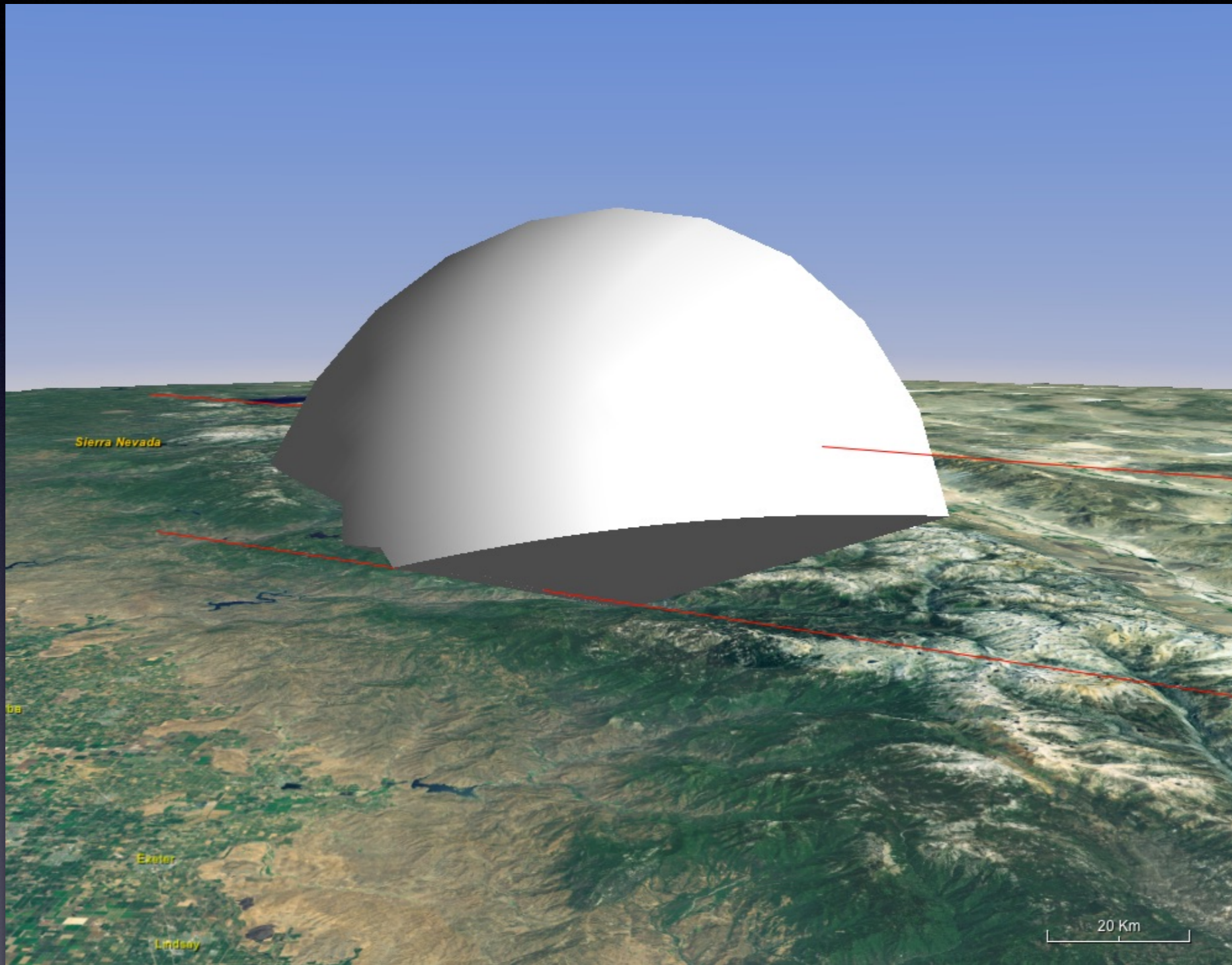
Upload Data

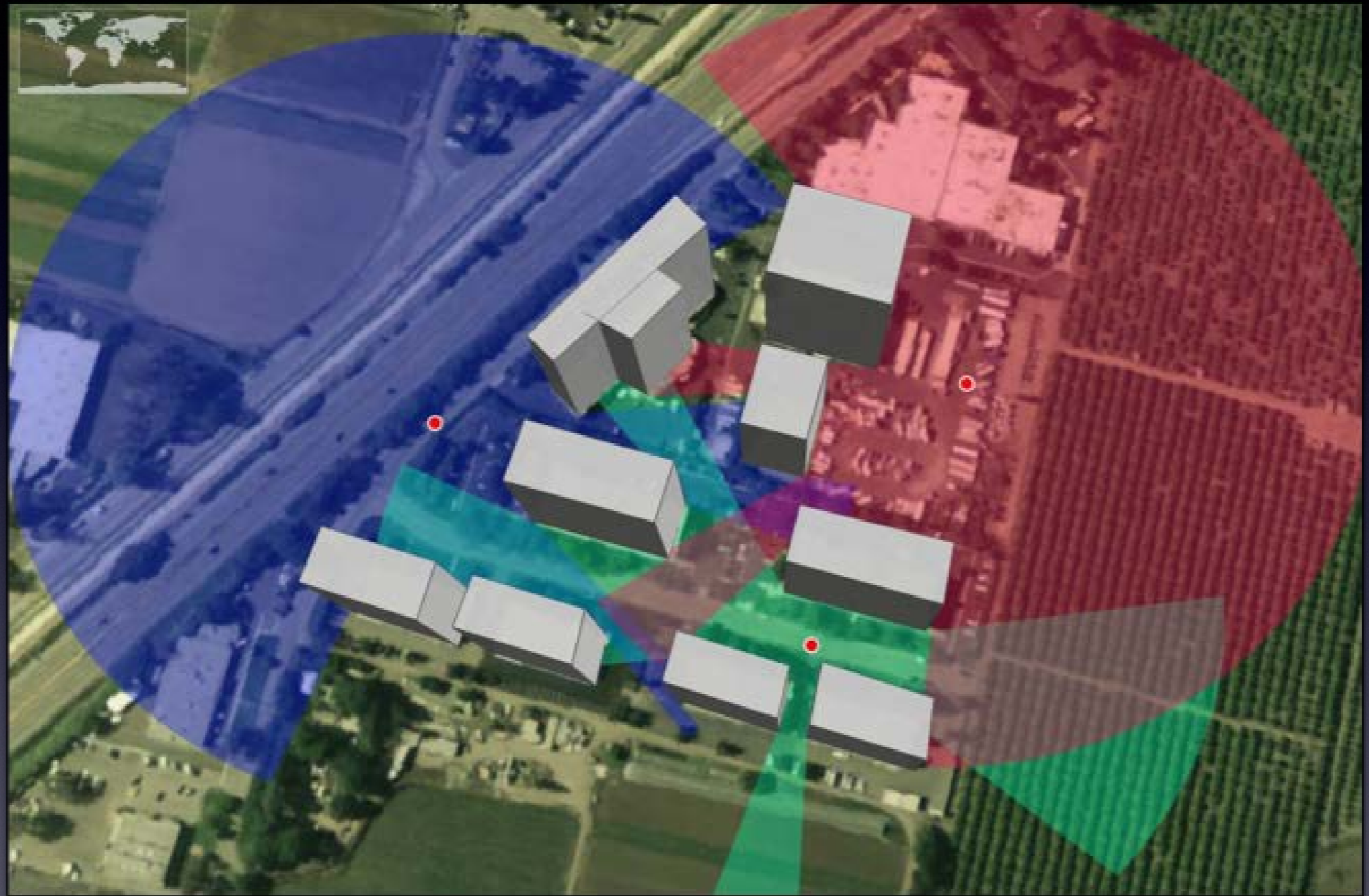
Load Data



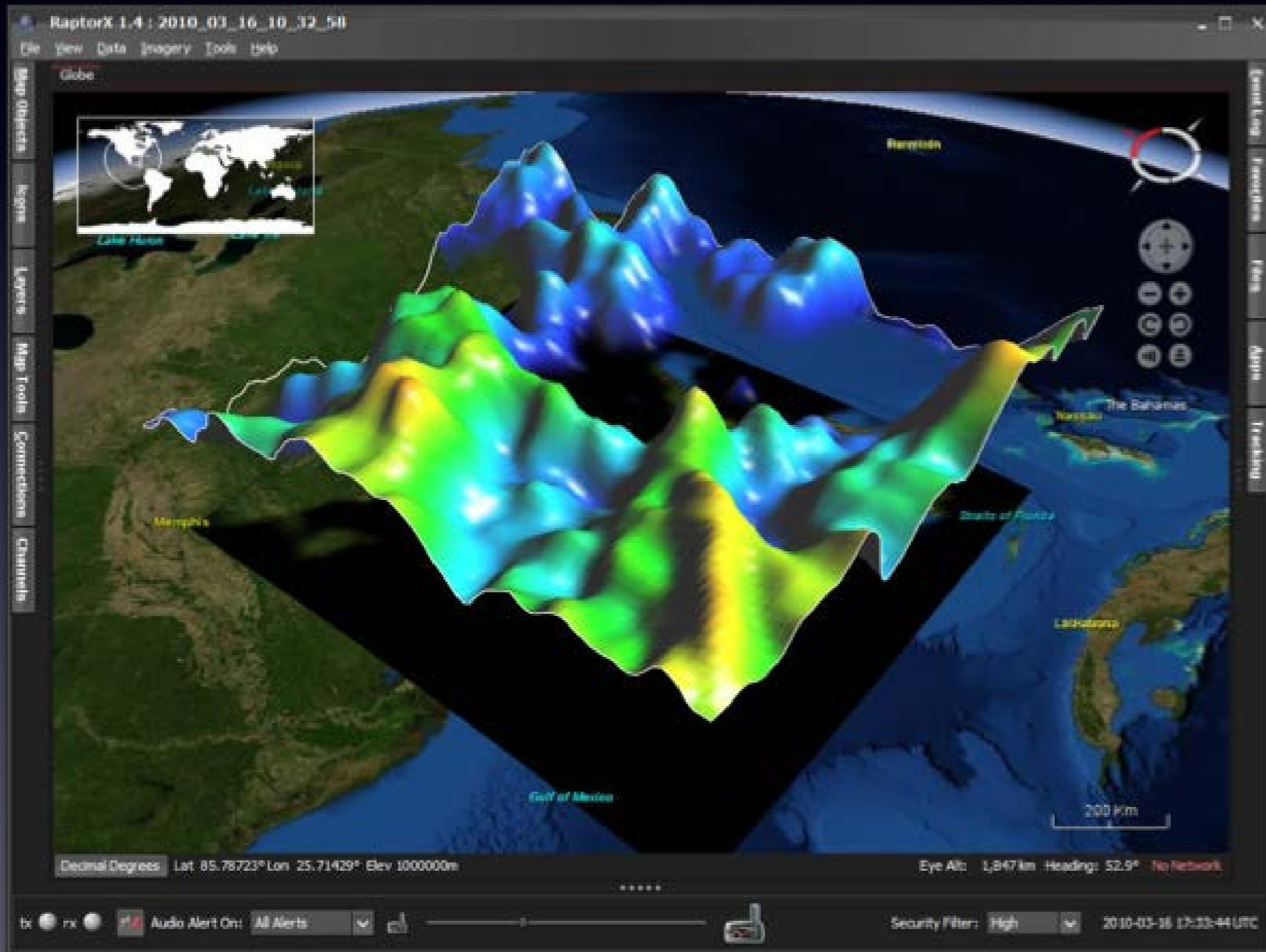




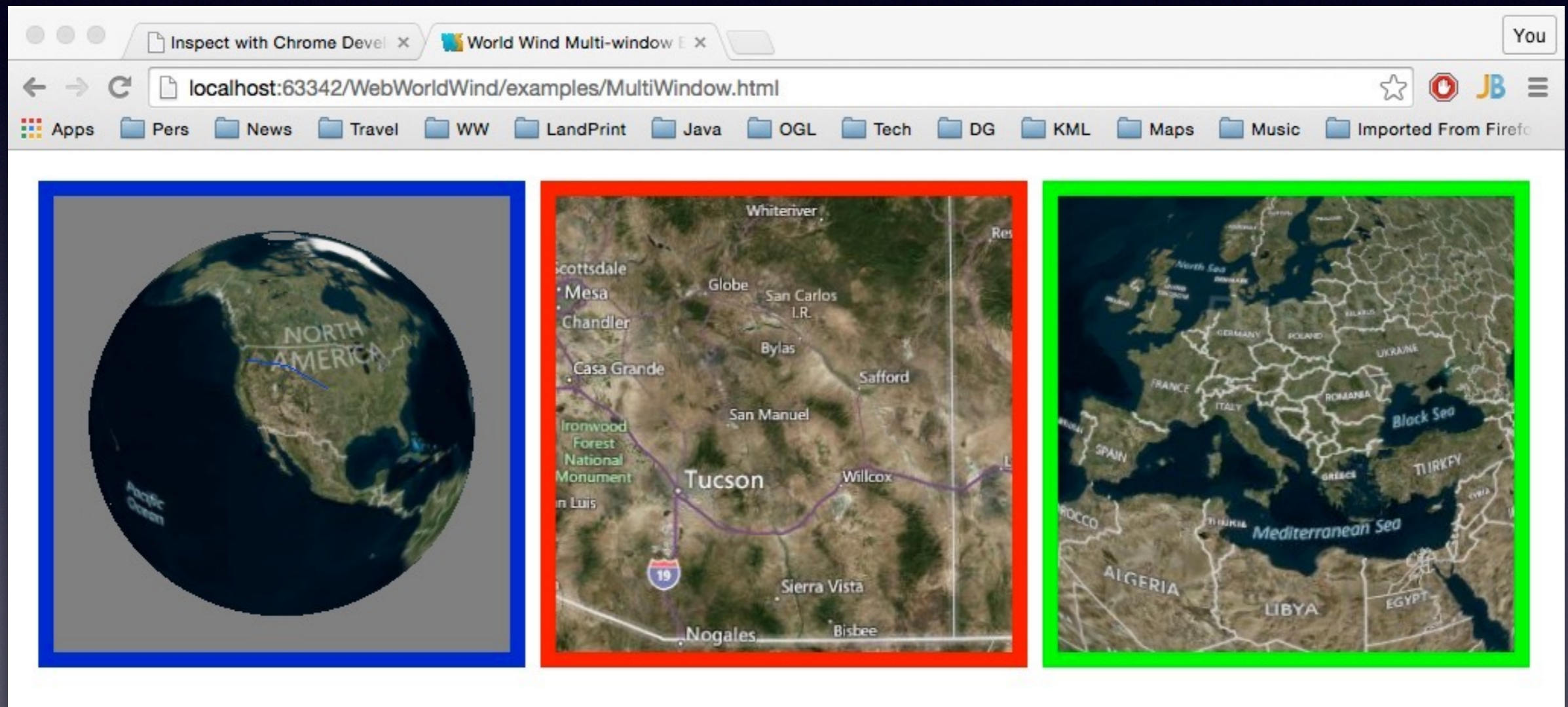


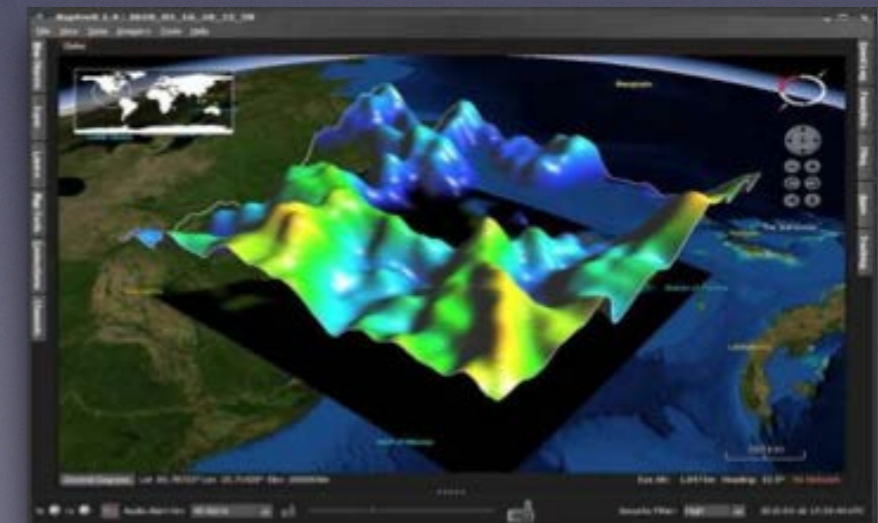
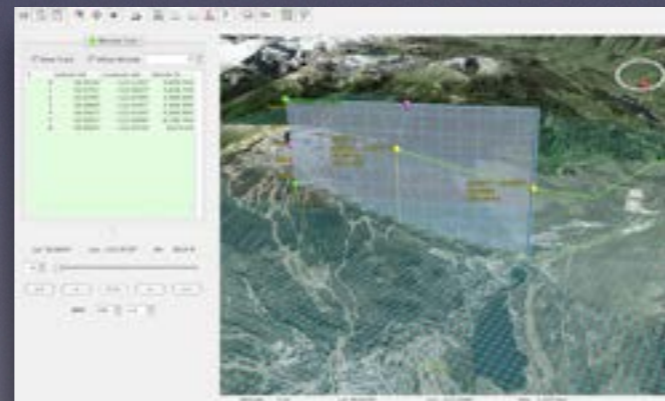
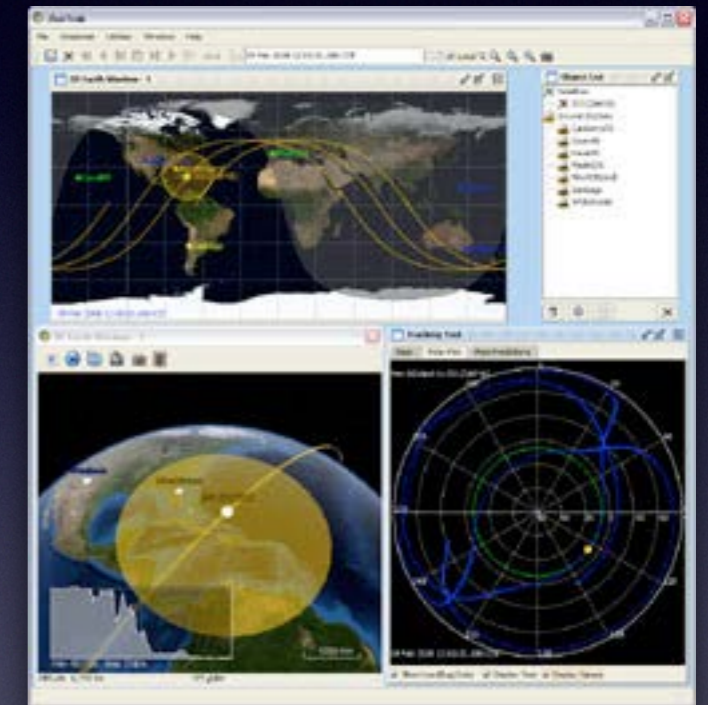
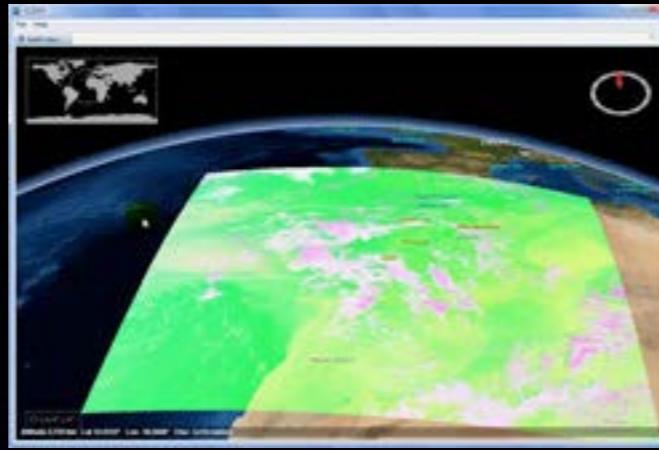
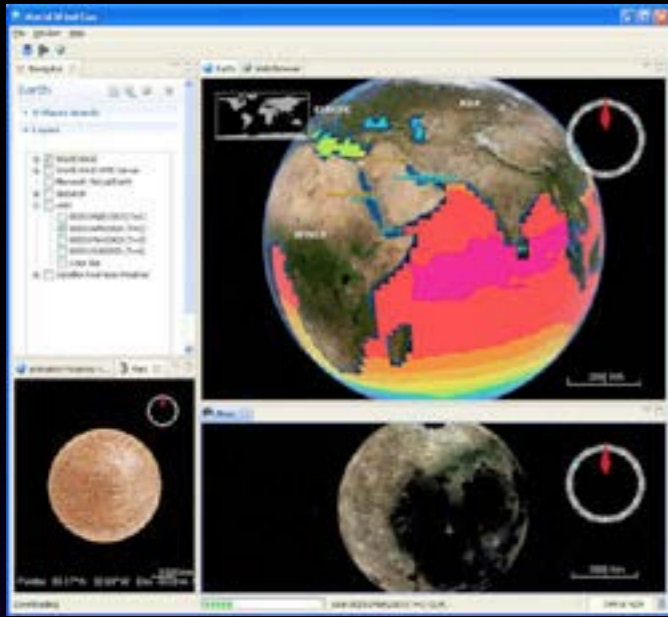


Analysis Applications



Multi-Window





World Wind Users

- DOE
- DOD
- FAA
- Homeland Security



World Wind Technology Drives Innovation

Java-based client

Runs on all major platforms

Mobile devices soon

Java-based server

NASA & Public Domain Data

Compatible with special formats

Partnerships Drive World Wind Technology

.Gov: USDA, FSA, Federal Aviation Administration, USGS

.MIL: Department of Defense

Private Sector: PEMEX, GENERAL DYNAMICS, NORTHROP GRUMMAN, HARRIS, LOCKHEED MARTIN, BAE SYSTEMS

International: esa, JAXA, NATO

- Commercial
- Research
- Space

Features

- 3D Virtual Globe
- 2D Map with Projection Choices
- Imagery & Elevation Import
- Picking
- Extensible
- Data Retrieval via REST, WMS, WCS, WFS, Bing, User Defined
- Placenames
- KML Import
- Shapefile Import
- Decluttering
- Measurement
- Line of Sight
- Subsurface Visualization

Sub-Surface Soon

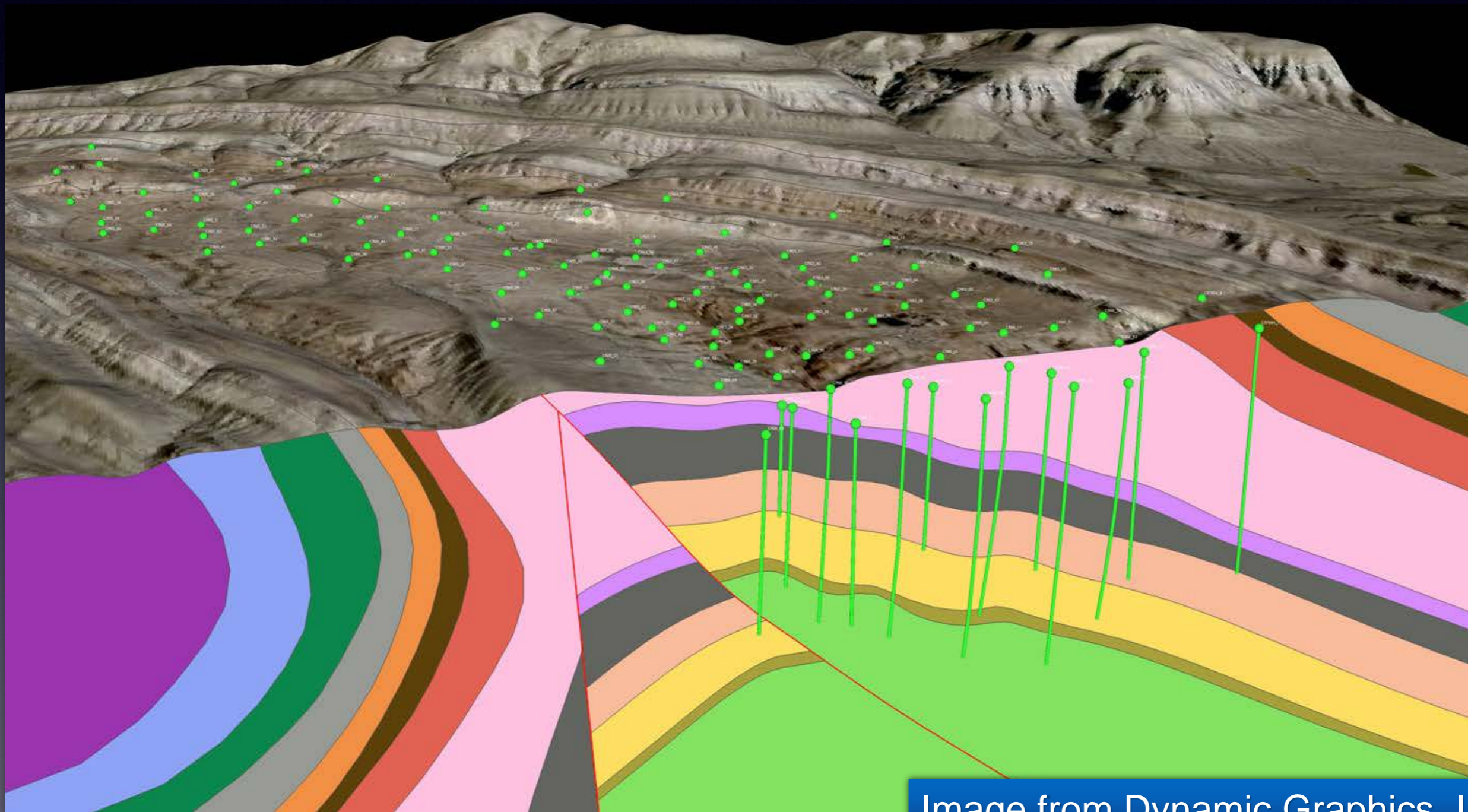
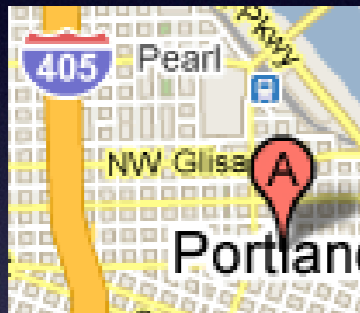


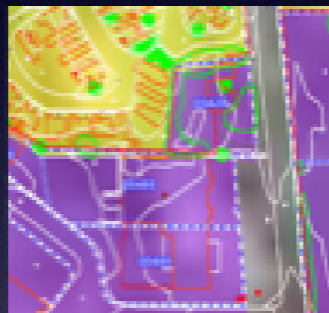
Image from Dynamic Graphics, Inc.

Data Types

Maps



Geometry



Imagery



Structures



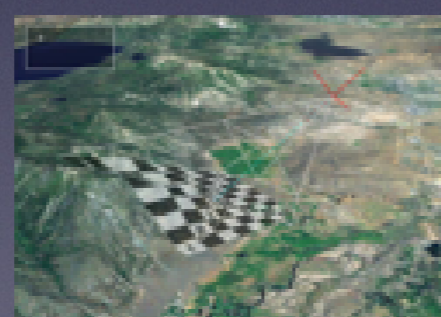
Terrain



Shapes



Video



GeoTIFF

KML

Collada

NITF

PNG

Shapefile

GeoRSS

RPF

JPEG (+2k)

GML

DWG

VPF

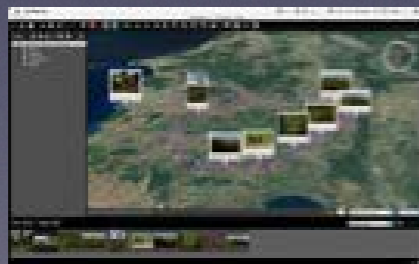
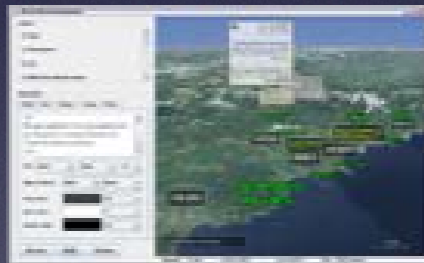
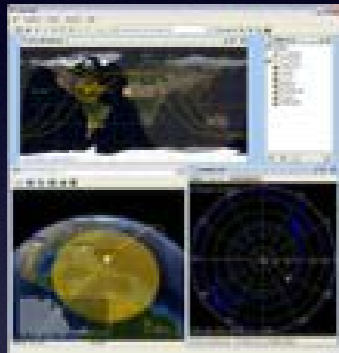
GeoJSON

DTED

NMEA

...

Data Sources



OGC Web Services

Database Services

File System

Proprietary Services

User Entry



Platforms

- Windows

- OS X

- Linux

- iOS

- Android OS

- Desktop

- Laptop

- Android

- iPad

- iPhone



- Internet Explorer

- Firefox

- Chrome

- Safari

Other Tools

- Google Earth
- OpenLayers
- Cesium
- Google Maps API
- Layerscape
- Unity Game Engine
- NOAA NeoViz
- ESRI Products
- Earth Vision
- GPlates

Documentation

User's Guide

API Docs

Examples

Forum

The screenshot shows the homepage of goworldwind.org. At the top left is the logo "goworldwind.org" and at the top right is the tagline "All World Wind resources in one place". Below this is a large satellite-style image of Earth. A navigation menu is located below the image, containing links for Home, Features, Demos, Examples, Dev Guide, Importing Data, Releases, World Wind iOS, World Wind Android, and About. Below the navigation is a search bar with a "Search" button. The main content area is titled "Complete Guide to World Wind Help Resources" and contains a list of links: [Get Started](#), [Features](#), [Demos](#), [Examples](#), [Common Problems](#), [Developer's Guide](#), [Server](#), [Releases](#), and [Android](#). To the right of this list is a "World Wind Topics" sidebar with a tree view of links including Get Started, Features, Demos, Examples, Developer's Guide (with sub-links for Concepts, Common Problems, and Symbology), How to: Build a Custom Renderable, 2D Rendering of Custom Shapes, Importing Data, Releases, World Wind iOS, World Wind Android (with sub-links for Get Started with World Wind Android, Android Development Environment Setup, and Android Demos), QinetiQ, and MapServer and Data Installation. Below the main list is a section "Other Important Sites" with links for [Release Site](#), [Forum](#), [API Docs](#), [Bug Base](#), [Subversion](#), and [Europa Challenge](#). A paragraph states: "The World Wind engineering team uses [JetBrains](#) products IntelliJ IDEA, AppCode and WebStorm to maximize their productivity." Below this paragraph are logos for IntelliJ IDEA and AppCode.

This is a mirrored version of the screenshot above, showing the same website content but with a dark background and inverted colors. The text and links are white and light blue, while the background is dark. The layout and content are identical to the top screenshot.

World Wind Summary

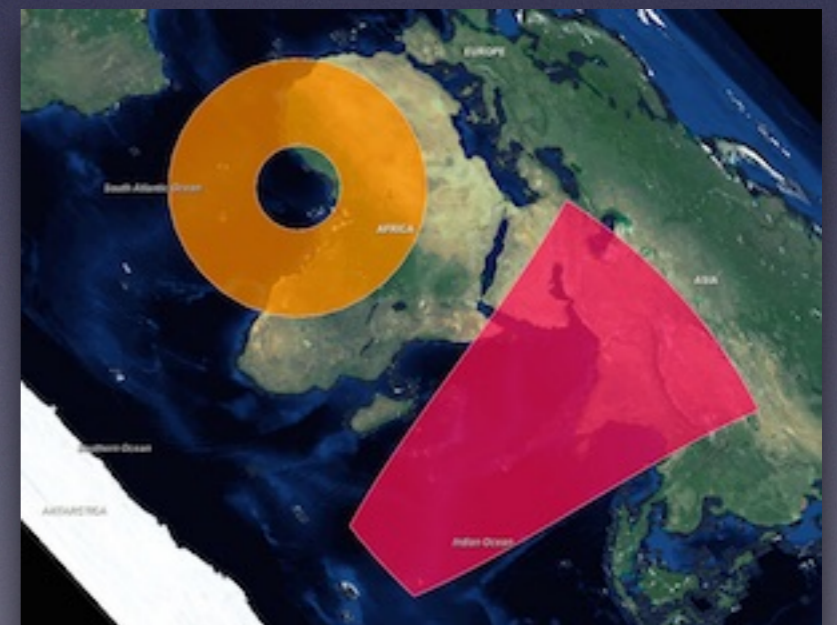
- Geographic Context for Information Visualization
- Component with API Rather than an App
- Quickly Learned and Incorporated
- Extensible so you can add your own functionality
- Open Source, Free and Unencumbered

Questions?

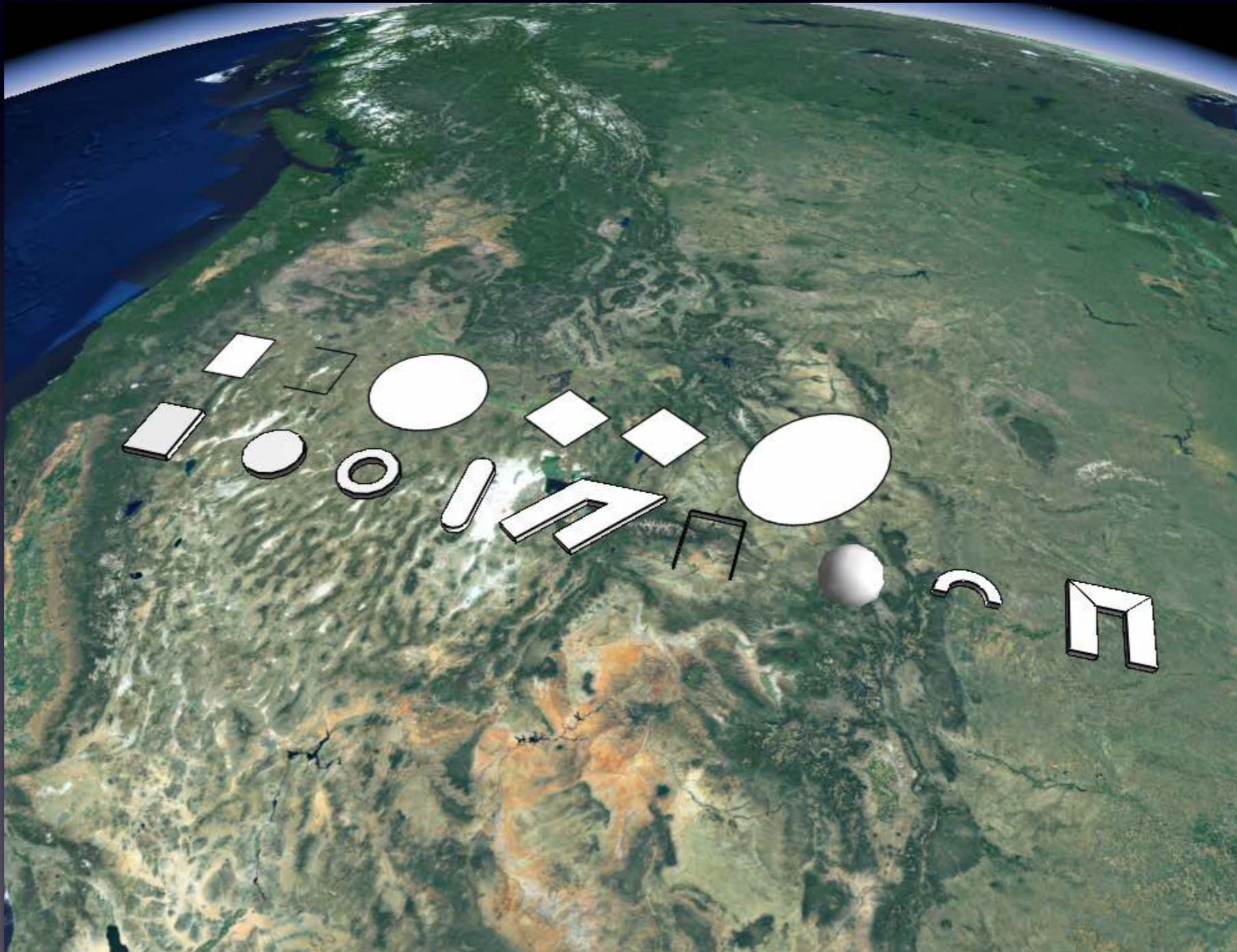
Thank You!

Shapes

- Placemark
- Path
- Polygon
- Extruded Polygon

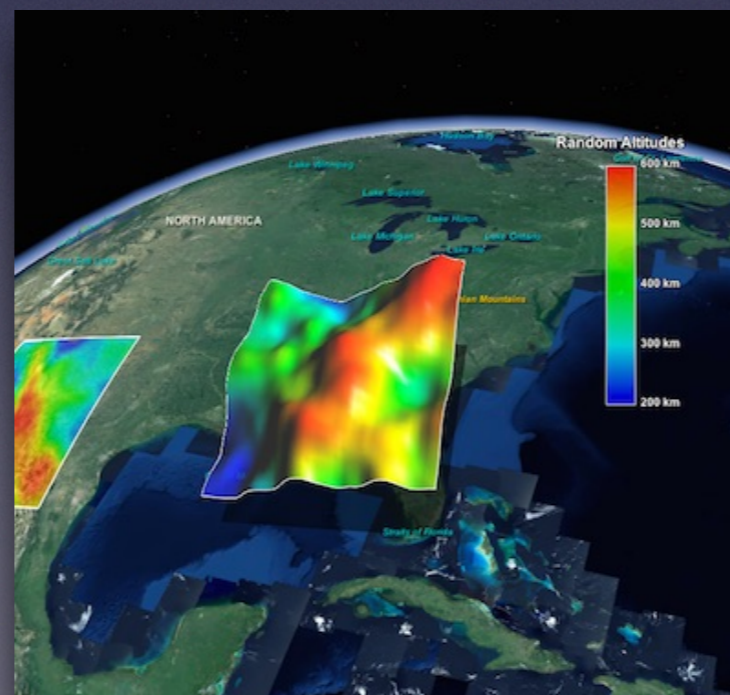


Surface Shapes

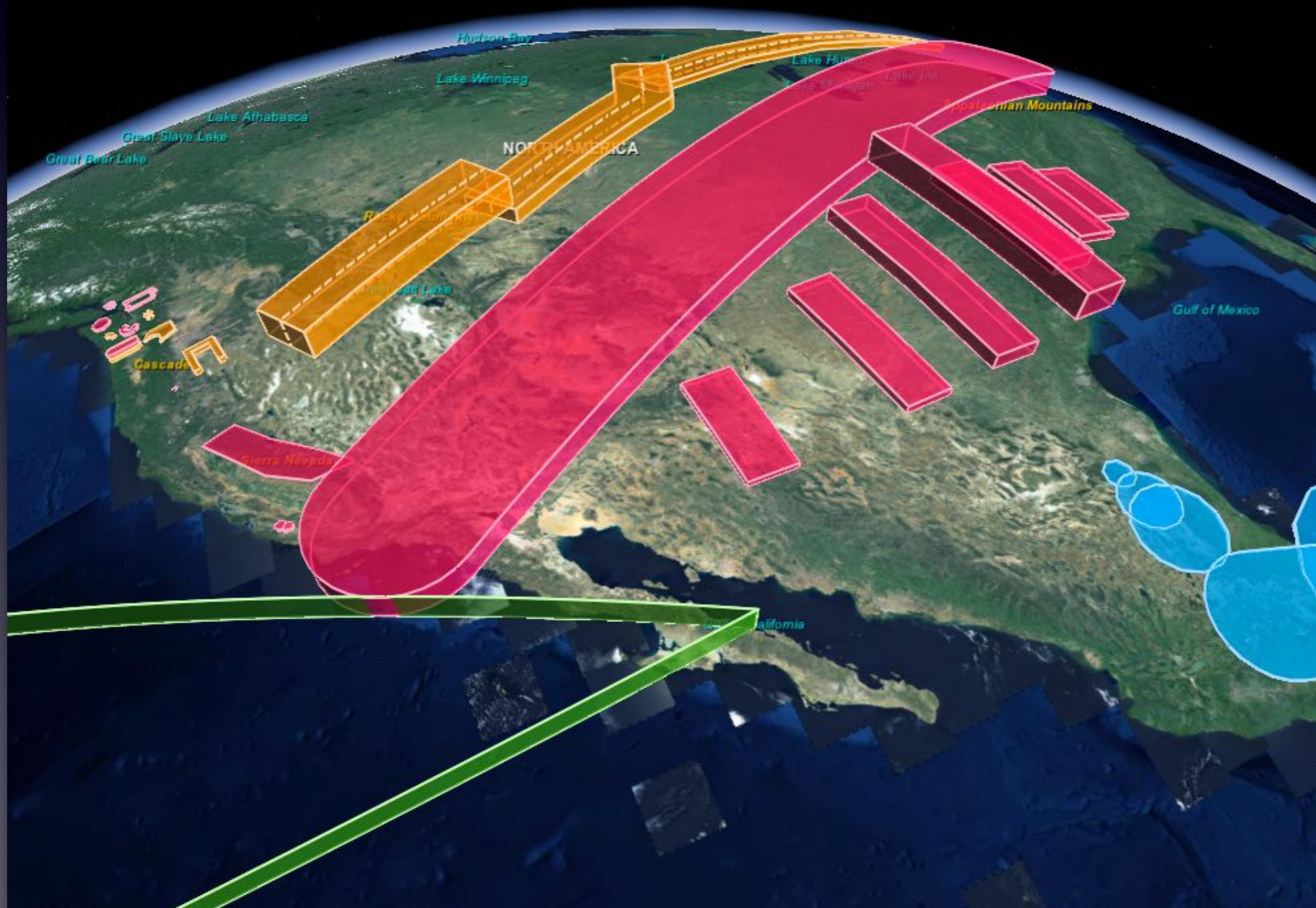


Shapes

- Geographic Text
- Balloon
- Analytic Surface



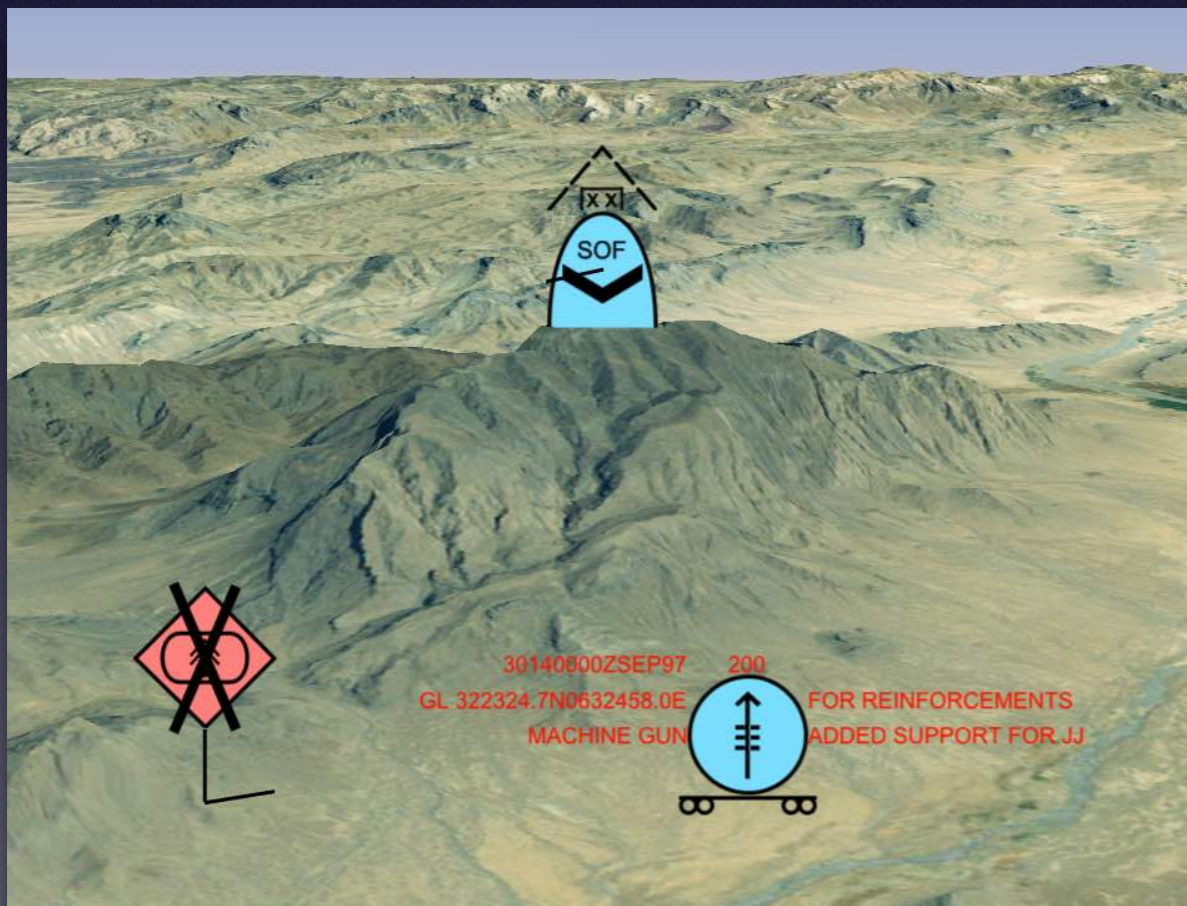
Airspaces



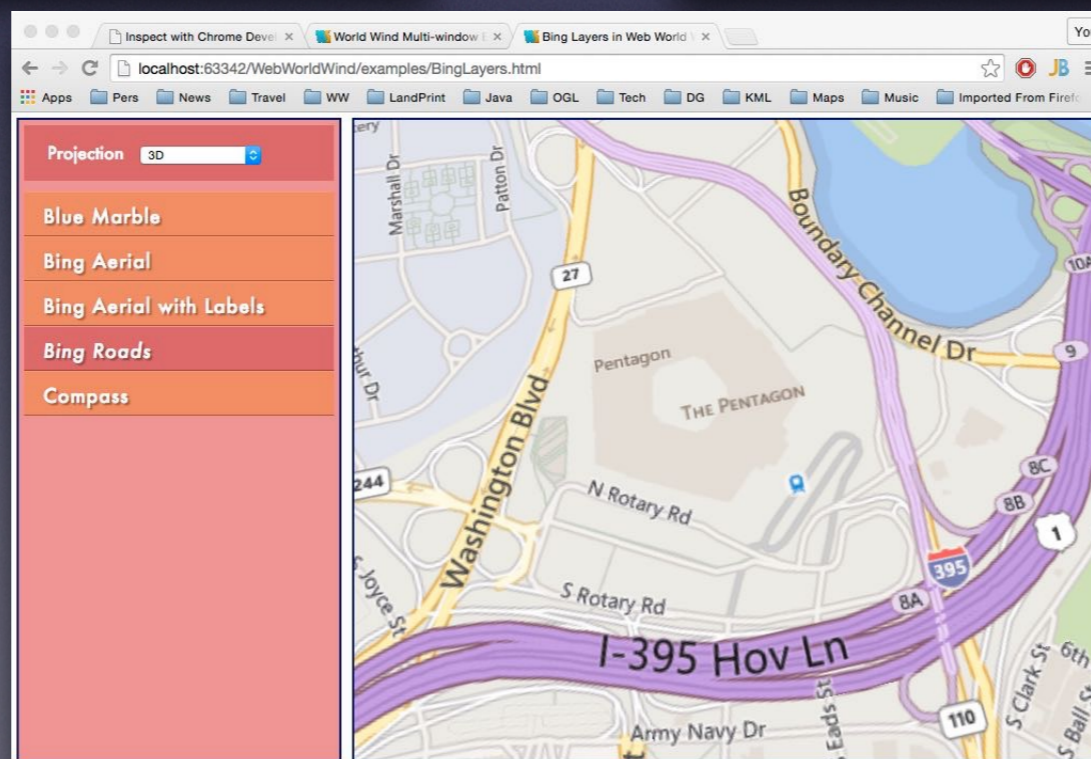
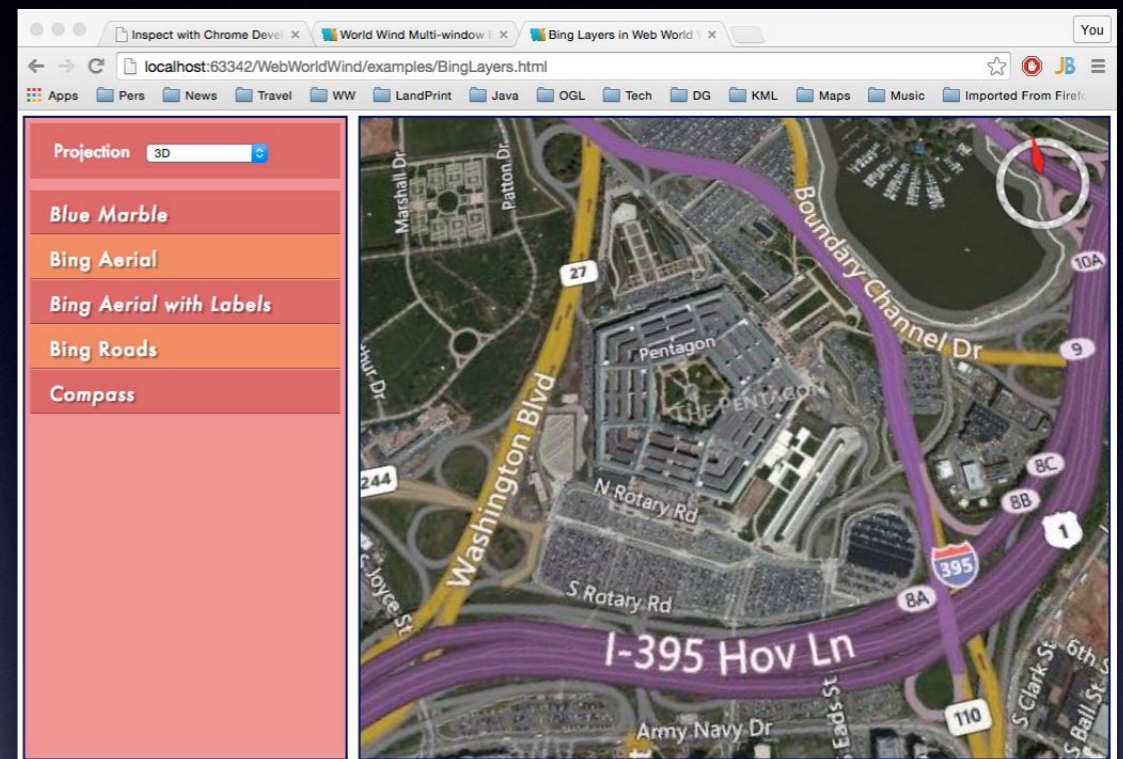
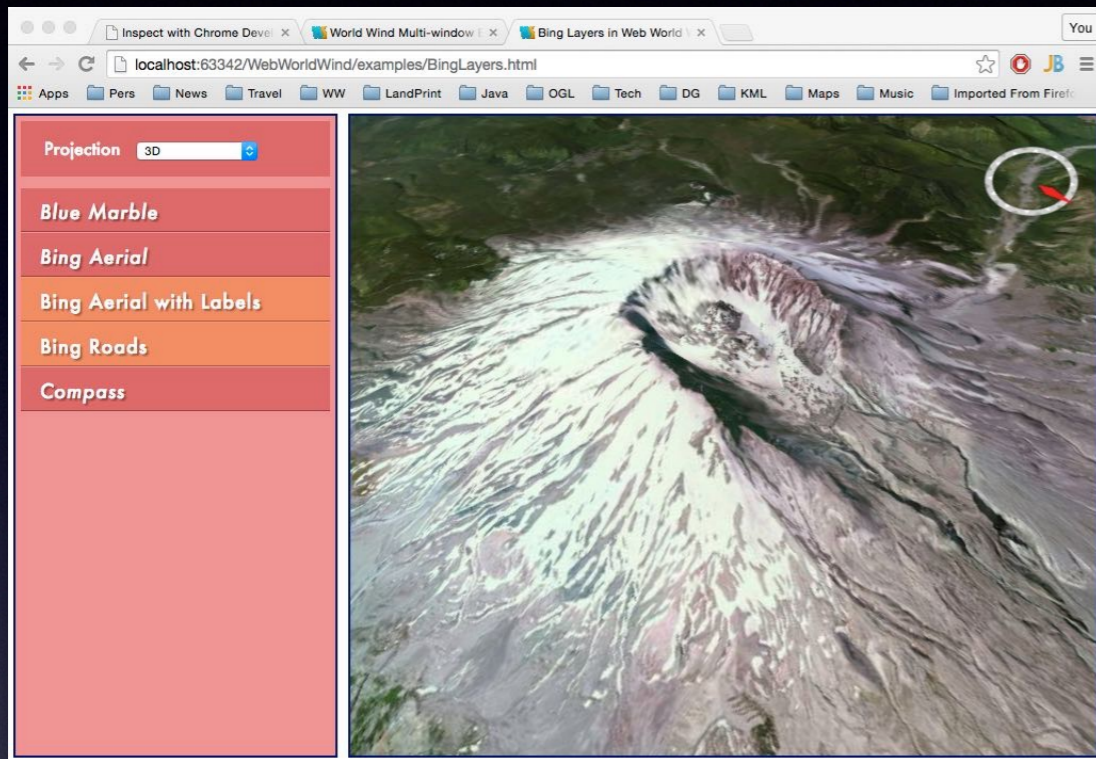
Mil-Std 2525

Tactical Symbols

Tactical Graphics



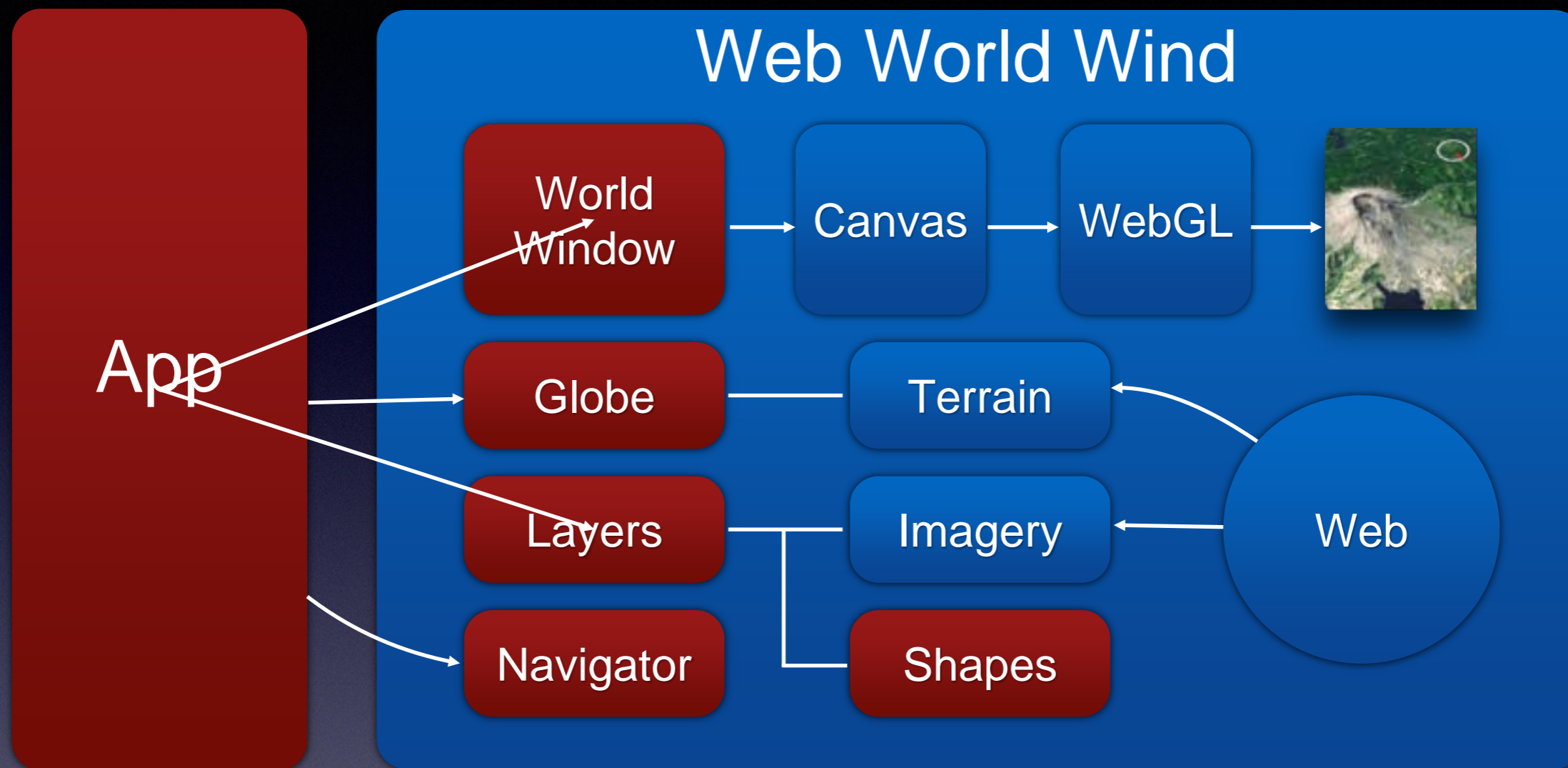
Bing Maps



Aerial
Aerial + Roads
Roads

Deployment Options





Architecture

World Wind Provides the Geographic Context


```
<!DOCTYPE html>
<html>
<head lang="en">
  <meta charset="UTF-8">
  <title>World Wind Example</title>
  <script src="../../worldwindlib.js" type="text/javascript"></script>
</head>
<body>
<div style="position: absolute; top: 50px; left: 50px;">
  <canvas id="canvasOne" width="1024" height="768">
  </canvas>
</div>
<script>
  window.addEventListener("load", eventWindowLoaded, false);

  function eventWindowLoaded() {

    var wwd = new WorldWind.WorldWindow("canvasOne");

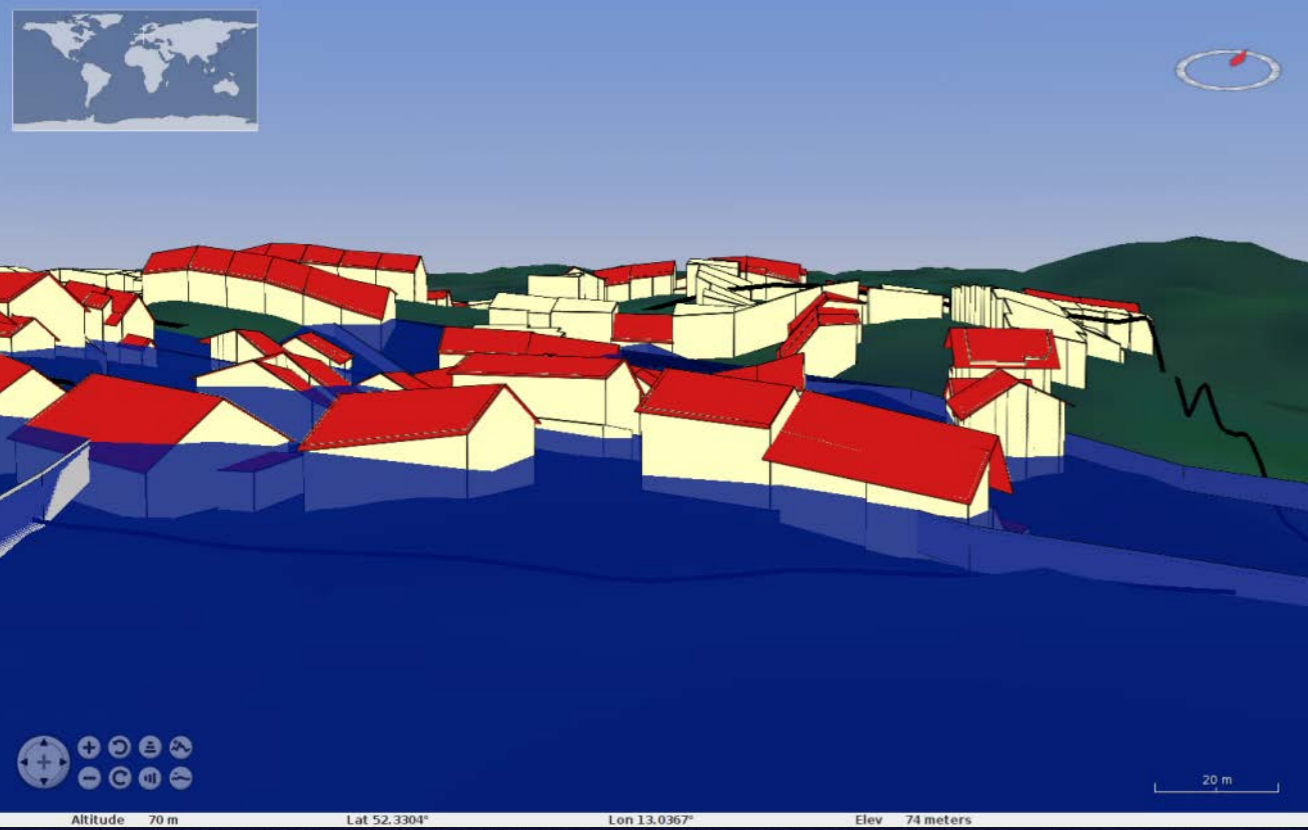
    wwd.addLayer(new WorldWind.BingAerialWithLabelsLayer());
    wwd.addLayer(new WorldWind.CompassLayer());
    wwd.addLayer(new WorldWind.ViewControlsLayer(wwd));
    wwd.redraw();
  }
</script>
</body>
</html>
```

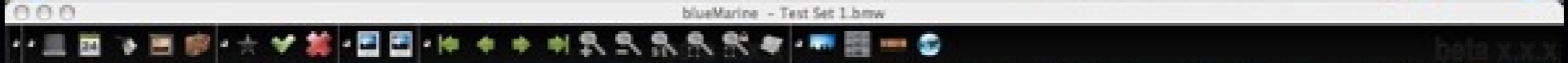
Examples

- Basic Example
<http://worldwindserver.net/webworldwind/examples/BasicExample.html>
- Bing Layers
<http://worldwindserver.net/webworldwind/examples/BingLayers.html>
- Placemarks and Picking
<http://worldwindserver.net/webworldwind/examples/PlacemarksAndPicking.html>
- Pick All Shapes in Region
<http://worldwindserver.net/webworldwind/examples/PickAllShapesInRegion.html>
- Paths
<http://worldwindserver.net/webworldwind/examples/Paths.html>
- Surface Shapes
<http://worldwindserver.net/webworldwind/examples/SurfaceShapes.html>
- Multi-Window
<http://worldwindserver.net/webworldwind/examples/MultiWindow.html>
- Geographic Text
<http://worldwindserver.net/webworldwind/examples/GeographicText.html>
- Surface Image
<http://worldwindserver.net/webworldwind/examples/SurfaceImage.html>
- Screen Image
<http://worldwindserver.net/webworldwind/examples/ScreenImage.html>



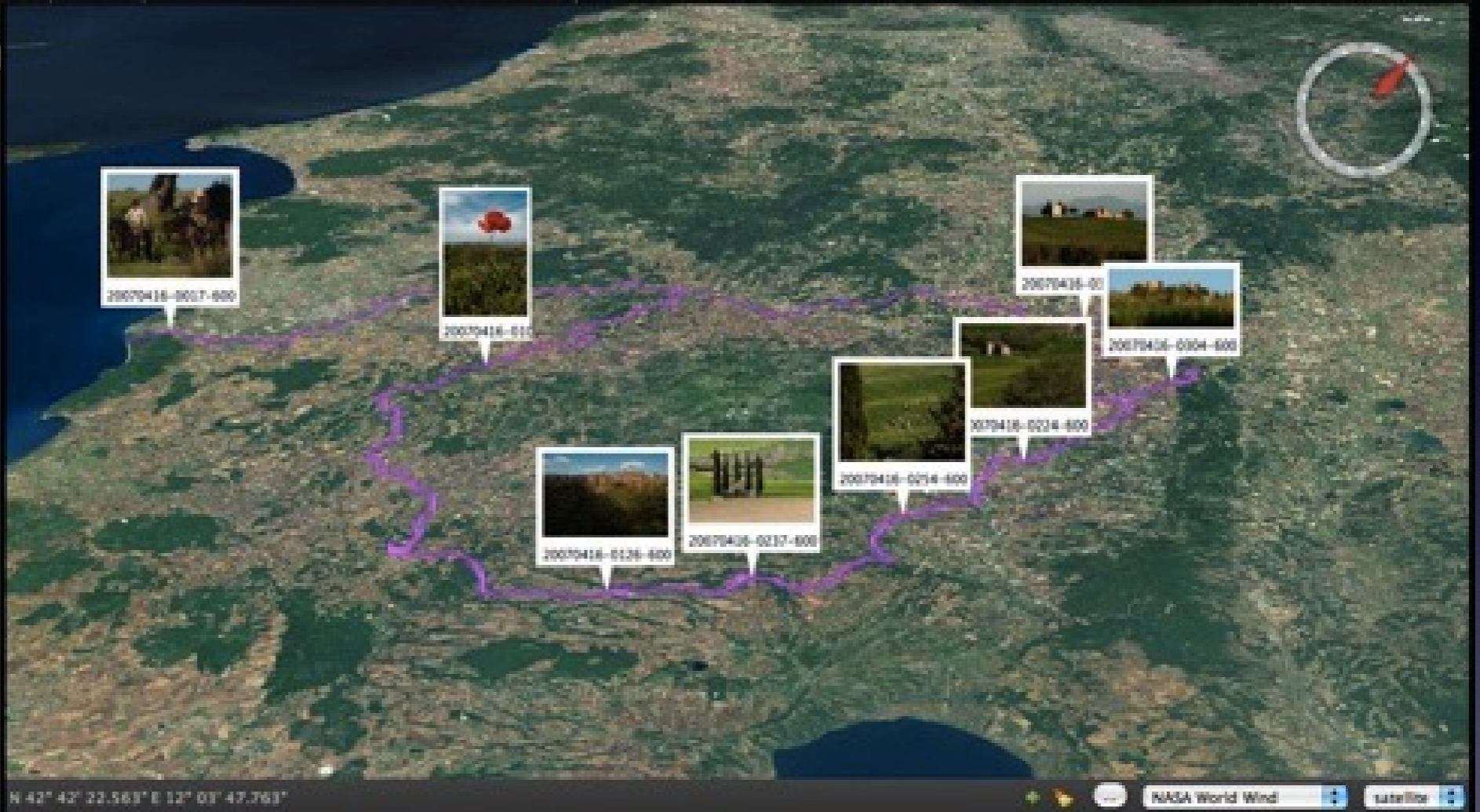
Live Target Analysis and Monitoring



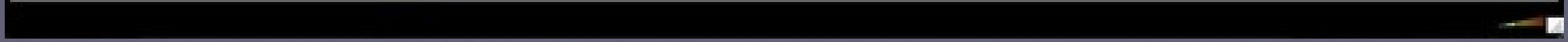


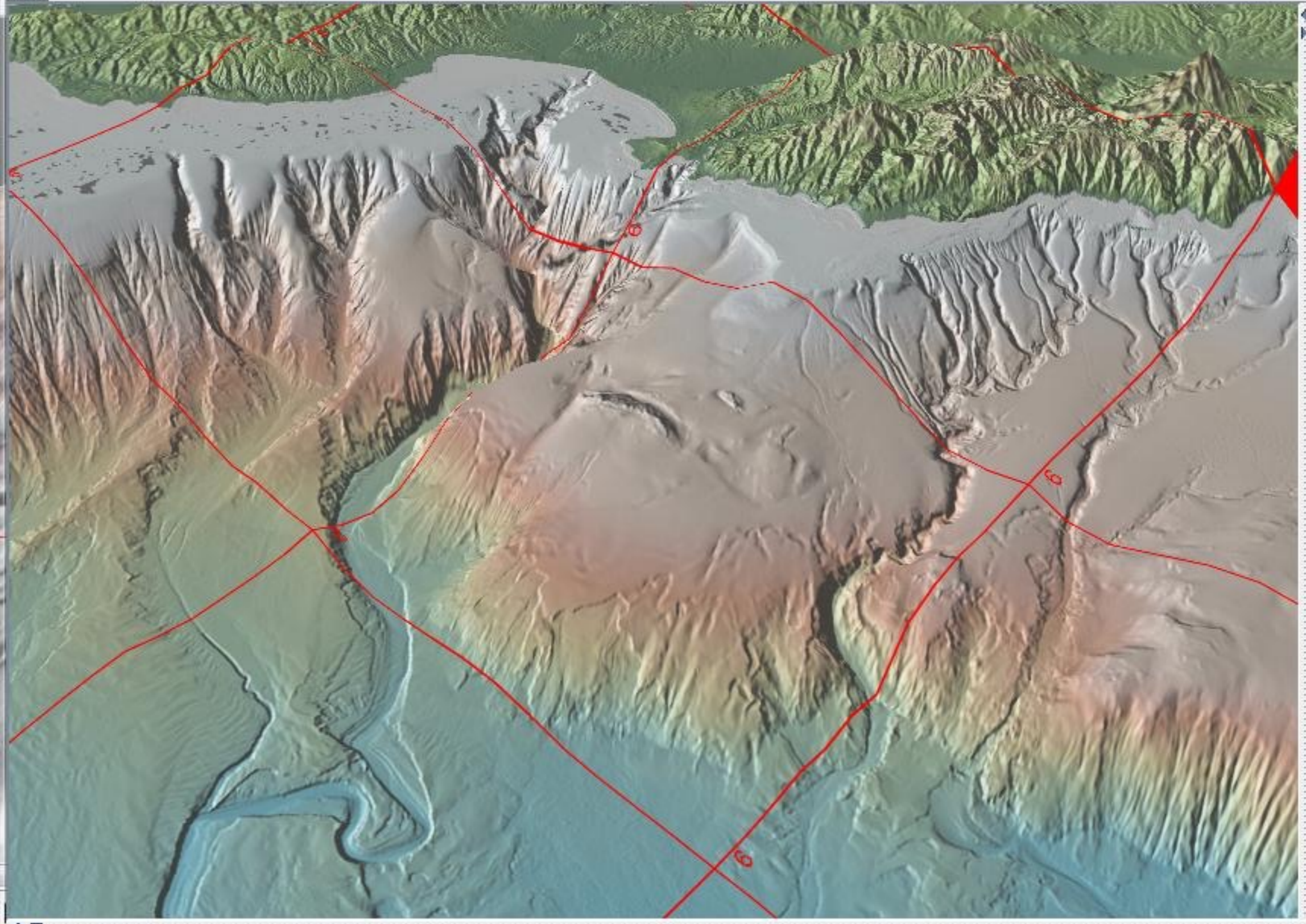
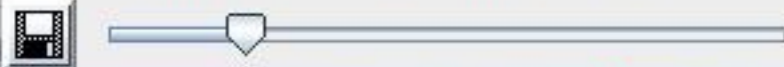
Trips

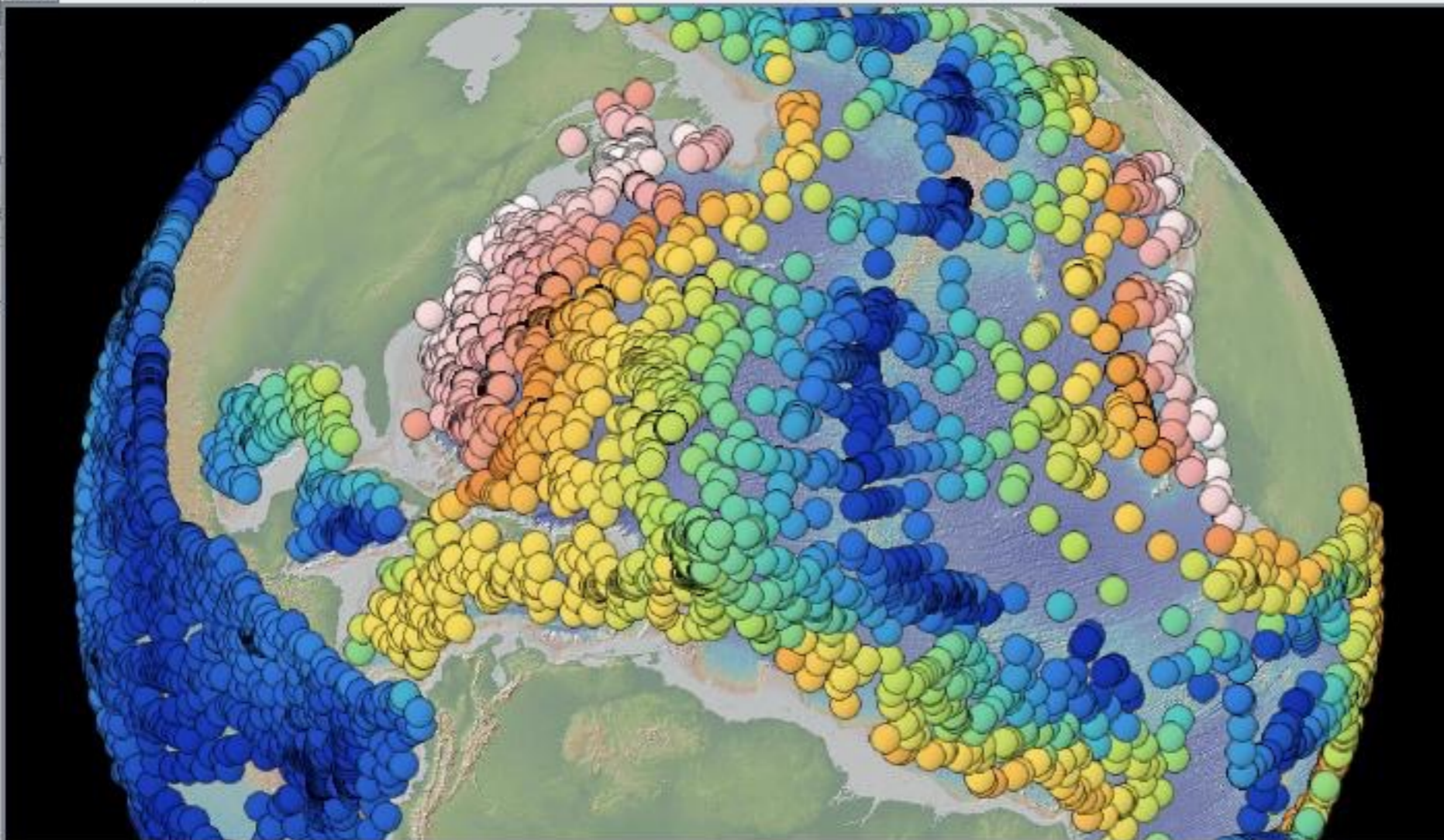
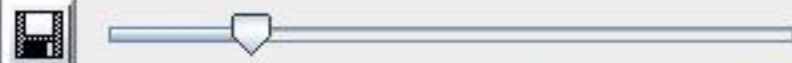
- April 16, 2007 - Test Trip
 - Path
 - Photos
 - Landmarks
 - Notes



Film Strip: "Test Trip" native order | S M L







Import Data (Tables)

close

Global Heat Flow Da... ▼

Save ▼

Load

Dispose

Bookmark

Configure

Graph

Color Symbols

Scale Symbols

Plot/Refresh

Thumbs

Global Heat Flow Data - Abbott Symbol Color - age Symbol Size - None Selected

lat	lon	epoch	label	depth	age	bot_water_t...	data_quality	pub_heat_fl...	recalc_heat...
0.983333	321.833	-3.36163E8	V15-3	-4137.0	63.900002	0	8	63.799999	NaN
0.2	320.1	-3.36099E8	V15-4	-4111.0	85.599998	0	8	46.599998	46.684799
2.5	319.083	-3.36008E8	V15-5	-4285.0	60.099998	0	8	56.200001	NaN
5.06667	318.983	-3.35922E8	V15-6	-4544.0	53.900002	0	8	79	81.008003
6.98333	318.933	-3.35836E8	V15-7	-4636.0	52.099998	0	8	92.099998	NaN
10.75	318.65	-3.35715E8	V15-8	-5002.0	4.2	0	8	151	157.892059
11.7	307.667	-3.35426E8	V15-9	-4984.0	60.400002	1.82	0	NaN	NaN
14.2333	302.9	-3.35267E8	V15-10	-5002.0	74.5	0	5	0	NaN
17.35	294.817	-3.34986E8	V15-12	-4303.0	99.449997	4.28	8	48.599998	NaN
20.917	292.592	-3.34723E8	V15-12	-5412.0	106.100007	2.02	8	62.500008	NaN

Map Layers

- Blue Marble
- Landsat
- USGS Digital Ortho
- USGS Urban Area Ortho
- Santa Barbara
- Place Names
- Compass

Item Layers

- Devices
- Entities
- Geotiff

Geotiff

Manage Feeds

Search Criteria

- 50 Miles
- D.C.
- Add Simulated Search



Navigation controls including a vertical zoom slider and a compass rose.



Price List

- World Wind Client
 - Single-user license \$ 0
 - 2 – 200 Users \$ 0
 - Enterprise (over 200 users) \$ 0
 - Source Code \$ 0
 - Support (email & forum) \$ 0
- World Wind Server
 - WMS Server, unlimited license & source code \$ 0
 - Primary Imagery (Blue Marble, I3, NAIP, etc.) \$ 0
 - Merged Elevations (NED 10, SRTM, Aster) \$ 0